

Period04 User Guide

P. Lenz, M. Breger

Department of Astronomy, Univ. Vienna, Türkenschanzstrasse 17,
 1180 Vienna, Austria

Abstract

Period04, an extended version of Period98 by Sperl (1998), is a software package designed for sophisticated time string analysis. In this article we present the User Guide for Period04.

Contents

1.	Introduction	55
1.1	Backwards compatibility	56
1.2	Obtaining Period04	56
1.3	Requirements	56
2.	The Graphical User Interface	57
2.1	The main window	57
2.2	The menu bar	57
2.2.1	The 'File' menu	57
2.2.2	The 'Special' menu	59
2.2.3	The 'Options' menu (available in expert mode only)	61
2.2.4	The 'Help' menu	61
2.3	The status bar	62
2.4	The 'Time string' tab	62
2.5	The 'Fit' tab	65
2.5.1	The Main tab	66
2.5.2	The 'Goodness of Fit' tab	70
2.6	The 'Fourier' tab	71
2.7	The 'Log' tab	75
2.8	Dialogs	76
2.8.1	The 'Weight selection' dialog	76
2.8.2	The 'Subdivide time string' dialog	76

2.8.3	The 'Combine substrings' dialog	78
2.8.4	The 'Show time structuring' dialog	79
2.8.5	The 'Calculate specific Nyquist frequency' dialog (available in expert mode only)	80
2.8.6	The 'Adjust time string' dialog	80
2.8.7	The 'Set default label for deleted points' dialog	82
2.8.8	The 'Relabel data point' dialog	82
2.8.9	The 'Edit substring' dialog	83
2.8.10	The 'Calculate epoch' dialog	83
2.8.11	The 'Recalculate residuals' dialog	84
2.8.12	The 'Predict signal' dialog	85
2.8.13	The 'Create artificial data' dialog	85
2.8.14	The 'Set alias-gap' dialog	86
2.8.15	The 'Show analytical uncertainties' dialog	86
2.8.16	The 'Improve special' dialog	87
2.8.17	The 'Calculate amplitude/phase variations' dialog	88
2.8.18	The 'Monte Carlo simulation' dialog	89
2.8.19	The 'Calculate noise at frequency' dialog	90
2.8.20	The 'Calculate noise spectrum' dialog	91
2.9	Plots	92
2.9.1	Time string plots	94
2.9.2	Phase plots	95
2.9.3	Fourier plots	96
2.10	Tables	97
2.11	Period04 preferences	98
2.12	The expert mode	100
2.13	The Data Manager (expert mode only)	101
2.14	Overview of Shortcuts:	104
3.	Getting Started	105
3.1	Tutorial 1: A first example	105
3.2	Tutorial 2: Least-squares fitting of data including a periodic time shift	112
4.	Using Period04	118
4.1	Topics related to time string data	118
4.1.1	Importing time strings	118
4.1.2	Exporting time string data	120
4.1.3	Creating artificial data	122
4.2	Topics related to Fourier calculations	123
4.2.1	Calculation of Fourier spectra	123
4.2.2	Significance of frequencies	124
4.3	Topics related to least-squares calculations	126
4.3.1	Calculation of least-squares fits	126
4.3.2	Calculation of amplitude/phase variations	127

4.3.3	Using the periodic time shift mode	128
4.3.4	Estimation of uncertainties	129
4.4	General topics	132
4.4.1	Using weights	132
5.	Copyright notice	135
5.1	Third party software	135

1. Introduction

Period04 is a computer program especially dedicated to the statistical analysis of large astronomical time series containing gaps. As its predecessor, Period98, the program offers tools to extract the individual frequencies from the multiperiodic content of time series and provides a flexible interface to perform multiple-frequency fits.

Fundamentally, the program is composed of 3 modules:

- **The Time String Module**

Within this module the user administrates the time string data. The module contains tools to split a data set into substrings, combine data sets, set weights, etc.

- **The Fit Module**

Least-squares fits of a number of frequencies can be made in this module. Apart from basic fitting techniques, Period04 also contains the possibility to fit amplitude and/or phase variations, or to take into account a periodic time shift. Furthermore, several tools for the calculation of uncertainties of fit parameters, such as Monte Carlo simulations, are available.

- **The Fourier Module**

For the extraction of new frequencies from the data, this module is provided. The Fourier analysis in Period04 is based on a discrete Fourier transform algorithm. We do not use a Fast Fourier Transform (FFT) algorithm as astronomical time string data sets usually are not equally spaced.

Some tools or functions are only accessible when the program operates in the so called 'Expert mode'. A detailed description of the expert mode can be found in section 2.12.

Period04 is project oriented and saves all data (time string data, Fourier spectra, frequencies and the log) in one central project file. The project file

itself is completely platform independent. This allows the user to switch between various operating systems. As the program also stores the current program settings along with the data, it is easy to resume work on a project.

1.1 Backwards compatibility

Period04 is based on Period98 by Sperl (1998). Period98 project files (.p98) can be read by Period04 without any problems. The default extension for Period04 project files is .p04 though.

1.2 Obtaining Period04

Period04 is freely available and has been compiled for Linux, Windows and MacOSX. The program can be downloaded from the Period04 website:

<http://www.astro.univie.ac.at/dsn/dsn/Period04/>.

The installers will guide you through the installation process.

1.3 Requirements

Period04 is a Java/C++ hybrid program. Therefore, to run the program a Java Runtime Environment (JRE) has to be installed. The JRE is already preinstalled on every Mac OS X System. Windows and Linux users will have to check if there already exists a JRE on their system. To do that simply open a shell or a command prompt and type 'java -version' If the command is not found no Java is installed. In this case you have to download it from <http://java.sun.com/getjava>. It is free. If the 'java' command exists, please check the version number. The Period04 binary works with all versions from 1.4.2.

2. The Graphical User Interface

In this chapter the Period04 User Interface will be explained in detail.

2.1 The main window

The main window of Period04 consists of 3 parts: the menu bar at the top, the status bar at the bottom and a tabbed frame in the center. The tabbed frame contains 4 folders:

Time string	a module for the management of time string data
Fit	a flexible interface for least-square fitting
Fourier	a module for the calculation of Fourier transforms
Log	contains the protocol of all actions taken

The 'Time string' folder is activated by default after start-up.

2.2 The menu bar

The menu bar gives access to 3 menus (File, Special and Help) in default mode, whereas in the expert mode an additional menu entry, Options, is available. See Section 2.12: 'The expert mode' for more details on additional features.

2.2.1 The 'File' menu



Figure 1: The 'File' menu

- **New Project**
This command closes the current project and creates a new empty project.
- **Load Project**
Use this command to open an existing Period04 (or Period98) project file. The file extension of Period04 projects is '.p04'.
- **Save Project**
Save the complete project (time string data, frequencies, Fourier spectra,...) into a file. If you save the project for the first time you will be asked to provide a name and a path for the file. Thereafter, each time you save, the changes will automatically be written to this file.
- **Save Project As**
Provides the possibility to save the current project under a different name.
- **Recent project-files**
Gives instant access to up to 10 recently edited projects. The file paths of projects are saved in a file named '.period04-recentfiles' which can be found in the user directory.
- **Import**
This menu entry contains the following entries:
 - **Import time string:**
Imports a time string from a file. If the project already contains time string data the user will be asked whether he wants to erase the old time string. Please see section 4.1.1 for further details on this topic.
 - **Import frequencies:**
Import frequencies, amplitudes and phases from a file.
- **Export**
The 'Export' menu entry holds three items:
 - **Export time string:**
Saves selected data columns into a file. Please see section 4.1.2 for further details.
 - **Export frequencies:**
Saves frequency data into a file.
 - **Export log file:**
Saves the protocol into a file.

- **Manage Data** (available in expert mode only)
This command opens the Data Manager (section 2.13), a tool to edit project data.
- **Expert mode**
If the 'Expert mode' check box is selected, you will have access to additional tools (see section 2.12). This option is by default deselected.
- **Quit**
Quits the program. If the project has changed since the last backup the user will be reminded to save the project before closing the program.

2.2.2 The 'Special' menu

The special menu contains tools related to time string management, least-squares fitting and Fourier noise calculations.

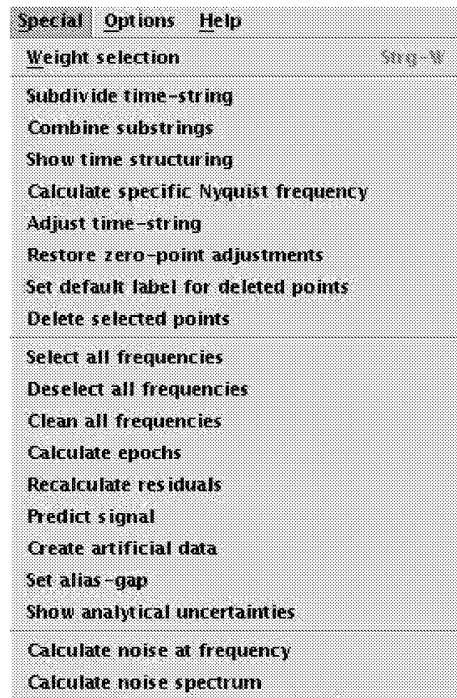


Figure 2: The 'Special' menu in expert mode

- **Weight selection**
Starts a dialog for activating weights. The chosen weight selection will be used in Fourier calculations as well as in least-squares calculations.

Time string related menu entries:

- **Subdivide time string**
Opens a dialog to divide the time string into substrings.
- **Combine substrings**
Opens a dialog to combine substrings.
- **Calculate Nyquist frequency** (available in expert mode only)
Calculate the Nyquist frequency for a user-defined time range.
- **Show time structuring**
Show some information on the time structuring of the current time string.
- **Adjust time string**
Opens a dialog for adjusting zero-point variations.
- **Set default label for deleted points**
Opens a dialog to define the default name and the attribute of the substring in which deleted data points will be put.
- **Delete selected points**
Deletes all points belonging to the currently selected time string irrevocably.

Menu entries related to least-squares fitting:

- **Select all frequencies**
Selects all frequencies in the Fit Module.
- **Deselect all frequencies**
Deselects all frequencies in the Fit Module.
- **Clean all frequencies**
Cleans the frequency list in the Fit Module.
- **Calculate epochs**
Calculates the times of epochs for every active frequency.
- **Recalculate residuals**
Recalculate the residuals using the current selection of time points and a user-defined zero point.
- **Predict signal**
Predict the magnitude or intensity at a specific time according to the current fit.

- **Create artificial data**
Opens a dialog for creation of artificial data.
- **Set alias-gap**
Opens a dialog to set the step size for frequency adjustments.
- **Show analytical uncertainties**
Opens a window that displays the parameter uncertainties based on the assumption of an ideal case.

Menu entries related to Fourier calculations:

- **Calculate noise at frequency**
Opens a dialog to calculate the noise at a specific frequency.
- **Calculate noise spectrum**
Provides a tool to calculate a noise spectrum.

2.2.3 The 'Options' menu (available in expert mode only)

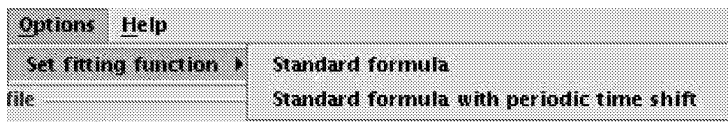


Figure 3: The 'Options' menu

- **Set fitting function**
Period04 contains the possibility to change the fitting formula. Apart from the default calculation mode, a fit including a periodic time shift can be made.

2.2.4 The 'Help' menu

- **Period04 Help**
Launches the Period04 help system.
- **Topics**
Gives access to certain Period04 topics in the help system.
- **Tutorials**
Launches the help system and shows the main page for the tutorials.

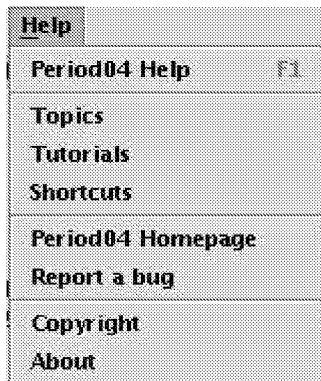


Figure 4: The 'Help' menu

- **Shortcuts**
Opens a page that lists all shortcuts that are supported by Period04.
- **Period04 - Homepage**
Launches a web browser and navigates to the Period04 homepage.
- **Report a bug**
Provides instructions for the submission of bugs.
- **Copyright**
Displays the copyright notice.
- **About**
Displays some information (i.e., the version number) about your copy of Period04.

2.3 The status bar

The status bar shows additional messages to inform the user of the status of the program. In case of File I/O actions a progress bar is displayed that indicates the progress of the task.

2.4 The 'Time string' tab

The Time String Module is dedicated to edit time string data. In the upper part of the 'Time string' tab buttons for loading and saving time string data are located:

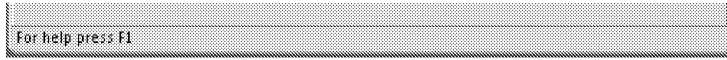


Figure 5: The status bar showing its default message.



Figure 6: The status bar showing the progress while loading a project.

- **Import**

Import time string data. If the current project is not empty, then the old time string data will be replaced and the remaining project data (frequencies, Fourier spectra and the log) will be erased.

- **Append**

Add a time string to the time string of the current project.

- **Export**

Save time string data to a file.

The text box next to the buttons contains the full path-names of the files from which the data have been imported. Below the text box some properties of the currently selected time string are shown:

- **Points selected**

The number of points that are currently selected.

- **Total points**

The total number of points in the time string.

- **Start time**

The lowest time value of the currently selected time string.

- **End time**

The highest time value of the currently selected time string.

- **Check box 'Time string is in magnitudes'**

If your data are in magnitudes instead of intensity this option should be selected. In case of magnitudes the y-axis of time string plots will be reversed – it is also important for correct epoch calculation. By default the program assumes that the data are in magnitudes. It is possible to change the default setting by editing the Period04 preferences (section 2.11).

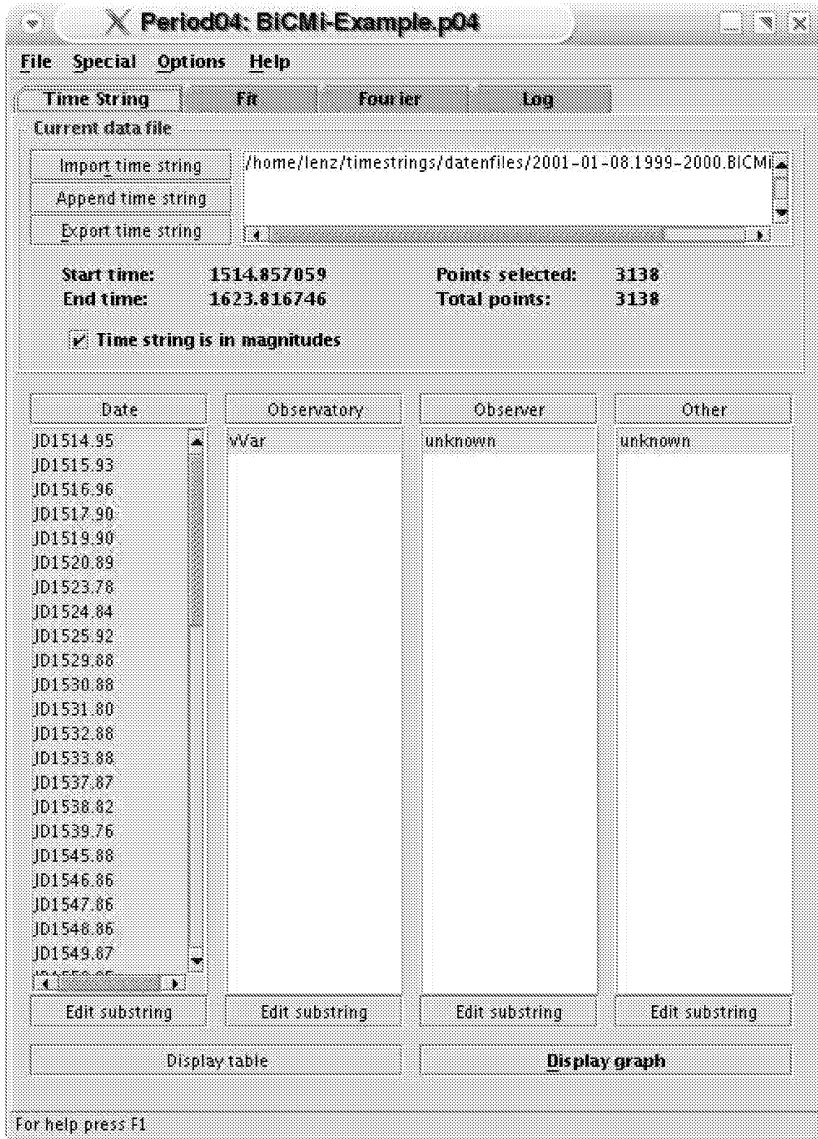


Figure 7: The 'Time string' tab.

The main part of the 'Time string' folder is made up of 4 list boxes. Each list box represents an attribute for the time string data. If you did not read in any attributes then the lists will show the entry 'unknown'. The names of the attributes can be changed by clicking on the headings on the top of the lists. You may also change the default names by editing the preferences file.

In the lower part of the Time String Module there are several buttons:

- **Edit substring**
Click on this button to edit the properties (name, color and weight) of the currently highlighted items (substrings) of the list. See section 2.8.9 for further details.
- **Display table**
Displays a list containing the full information on all data points of the selected time string.
- **Display graph**
Plots the selected time string and, if the resolution of the viewport is high enough, shows the current fit as well.

The columns in the Time String Module provide a pop-up menu too. The following entries are currently available:

- **Edit substring properties**
Opens a dialog to edit the properties of a substring.
- **Select all substrings**
Selects all substrings in the current list box.

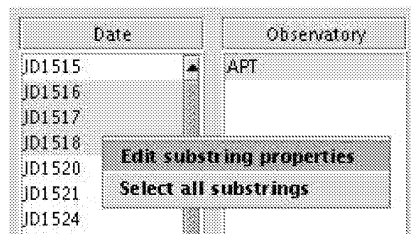


Figure 8: The pop-up menu for the list boxes in the Time String Module

2.5 The 'Fit' tab

The 'Fit' folder itself contains two tabs:

- **Main**
The 'Main' tab contains the frequency list, a panel to define the settings for least-squares calculations and several buttons to start calculations.
- **Goodness of Fit**
This tab provides tools for the calculation of uncertainties.

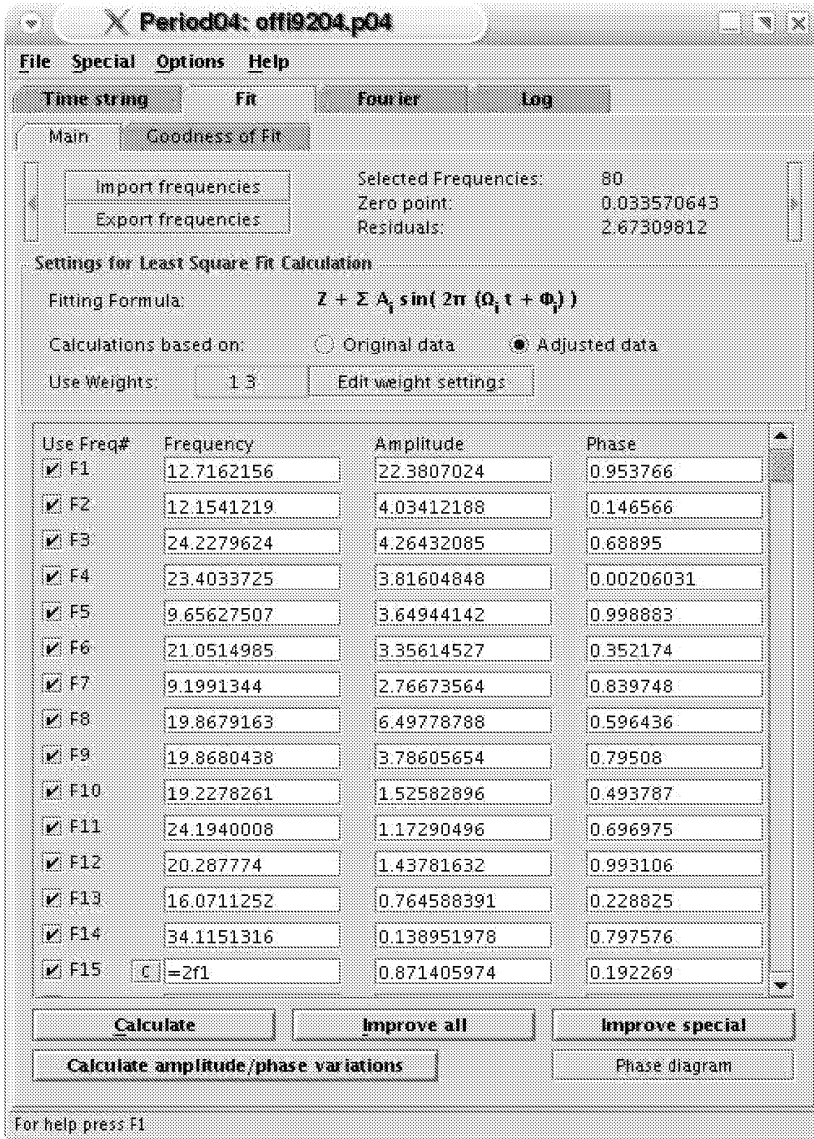


Figure 9: The 'Fit' tab.

2.5.1 The Main tab

In the upper part of the 'Main' folder buttons for loading or saving frequencies are situated. If the frequencies are imported from an external file, the file to be imported has to be formatted as shown below:

F1	8.245592	0.036872	0.191925
F2	8.866320	0.031595	0.201285
F3	(8.514142	0.009952	0.811823)

If the frequency parameters are enclosed by parentheses, the frequency will appear inactive in the frequency list.

Furthermore, some information regarding the current fit is given:

- **Selected frequencies**

The total number of active frequencies. A frequency is active (and will be included into calculations) when the respective check box is selected in the frequency list.

- **Zero point**

The zero point of the magnitudes/intensities resulting from the last calculated fit.

- **Residuals**

The residuals (χ) for the last calculated fit.

To the left of the import/export buttons and to the right of the information labels there is a toggle button, respectively.

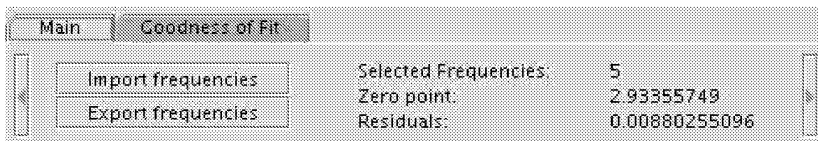


Figure 10: The toggle buttons.

A click on the left hand side toggle button detaches the 'Time string' tab from the main frame and places the 'Time string' panel to the left of the main frame, whereas a click on the right hand side toggle button causes the 'Fourier' tab to be detached and placed to the right of the main frame.

If your screen is wide enough this makes it possible to use Period04 without having to switch between the different tabs.

Settings for least-squares fit calculations:

- **Fitting formula**

Displays the formula that is being used for least-squares fits.

- **Calculations based on**

This defines the type of data (Original or Adjusted) to be used for the next least-squares calculation.

- **Use weights**

Displays a string that indicates which weights are being used for the least-squares calculation. If no weights are used 'none' will be displayed.

1	use the weights assigned to the substrings of attribute #1
2	use the weights assigned to the substrings of attribute #2
3	use the weights assigned to the substrings of attribute #3
4	use the weights assigned to the substrings of attribute #4
p	use point weight
d	use deviation weight

- **Edit weight settings**

Opens the weight-selection dialog.

The frequency list:

In the default mode the frequency list consists of input fields for frequency, amplitude and phase values and corresponding check boxes. If a check box is selected, then the respective non-zero frequency will be included in the next least-squares calculation.

Input options for frequency fields:

It is possible to enter harmonics or frequency combinations into frequency fields as shown in the examples below:

$=2f_1$ or $=2*f_1$ for the second harmonic of f_1 .

$=f_1+f_3$ for a combination frequency which is defined as the sum of f_1 and f_3 .

$=2f_1-3f_4$ for a combination frequency which is defined as the difference of the second harmonic of f_1 and the third harmonic of f_4 .
or $=2*f_1-3*f_4$

Please note:

A reference to a frequency, which is a combination itself, will be rejected by the program. If one of the frequencies listed in the combination is not active, the combination is not active either.

If a frequency is a combination, a little button showing the letter 'C' will appear between the frequency check box and the frequency input field. Click on this button to show the frequency value instead of the combination string and vice versa.

<input checked="" type="checkbox"/> F14		34.1151316	0.138951978	0.797576
<input checked="" type="checkbox"/> F15	C	=2f1	0.871405974	0.192269
<input checked="" type="checkbox"/> F16		23.3973832	0.826254667	0.165487

Figure 11: Example for an example combination frequency

Adding or subtracting the alias-gap value:

In order to add the alias-gap value to the frequency value, enter a trailing '+'. Type '-' if you want to subtract the alias-gap value. Multiple '+' or '-' can also be used, e.g., '34.11+++' means 34.11 with three times the alias-gap value added. The default value for the alias-gap can be set by using the 'Set alias-gap dialog' (section 2.8.14).

Extensions for the periodic time shift mode (available in expert mode only)

See also section 4.3.3: 'Using the periodic time shift mode' for an instruction on how to activate this option. If the periodic time shift (PTS) mode is active the frequency list is extended to contain input fields for the periodic time shift parameters.

Parameters for the periodic time shift:			
<input checked="" type="checkbox"/> PTS	Frequency	Amplitude	Phase
	0.0907926625	0.00149398066	0.514523
<input type="button" value="Search PTS start values"/>		<input type="button" value="Improve PTS"/>	
Use Freq#	Frequency	Amplitude	Phase
<input checked="" type="checkbox"/> F1	13.229652	6.55119322	0.493845
<input checked="" type="checkbox"/> F2	13.6935979	4.43512401	0.679253
<input checked="" type="checkbox"/> F3	13.4807455	2.80118443	0.986541

Figure 12: The frequency panel in the periodic time shift mode.

Furthermore, two additional buttons are available:

- **Search PTS start values**

Searches for a good start value within a given range by means of Monte Carlo shots.

- **Improve PTS**

Starts a least-squares calculation to improve the time shift parameters. For this calculation all three parameters of the periodic time shift will be improved, while the parameters of all other frequencies will be kept fixed.

Please note:

For the periodic time shift mode the buttons for showing the phase plot and the calculation of amplitude and/or phase variations will not be available.

2.5.2 The 'Goodness of Fit' tab

In this tab the uncertainties of the parameters can be calculated. See 'Estimation of uncertainties' (section 4.3.4) for further details.

- **Info**

Launches the Period04 help system and shows a page with some information on how to use Period04 to estimate the uncertainties of fit parameters.

- **Calculate LS uncertainties**

Calculates either correlated or uncorrelated uncertainties for the fitted parameters via a least-squares calculation.

- **Monte Carlo Simulation**

Opens a dialog which allows for the calculation of uncertainties for the fitted parameters by means of a Monte Carlo simulation.

- **Print list**

Prints the content of the text field.

- **Export list**

Opens a file-selector to save the content of the text field to a file.

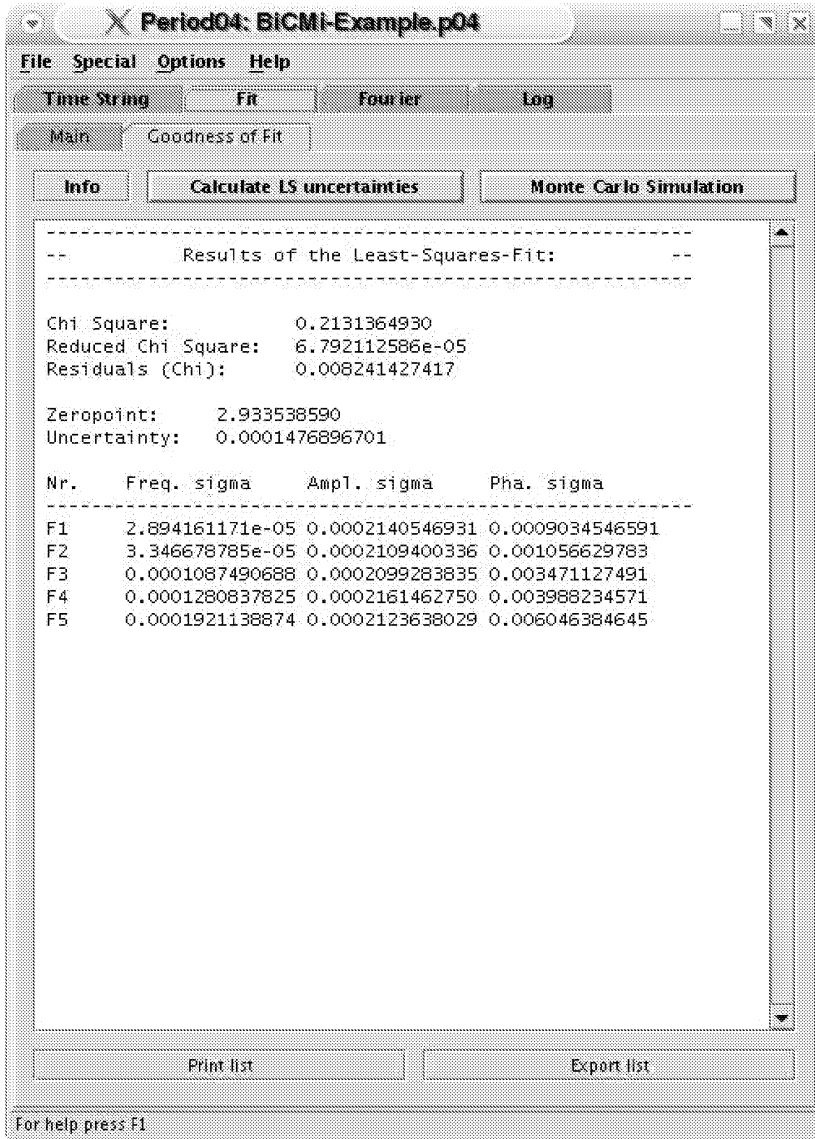


Figure 13: The 'Goodness of Fit' Tab

2.6 The 'Fourier' tab

The 'Fourier' folder basically consists of two parts:

- a panel for the Fourier calculation settings
- a list box that contains all Fourier spectra calculated so far.

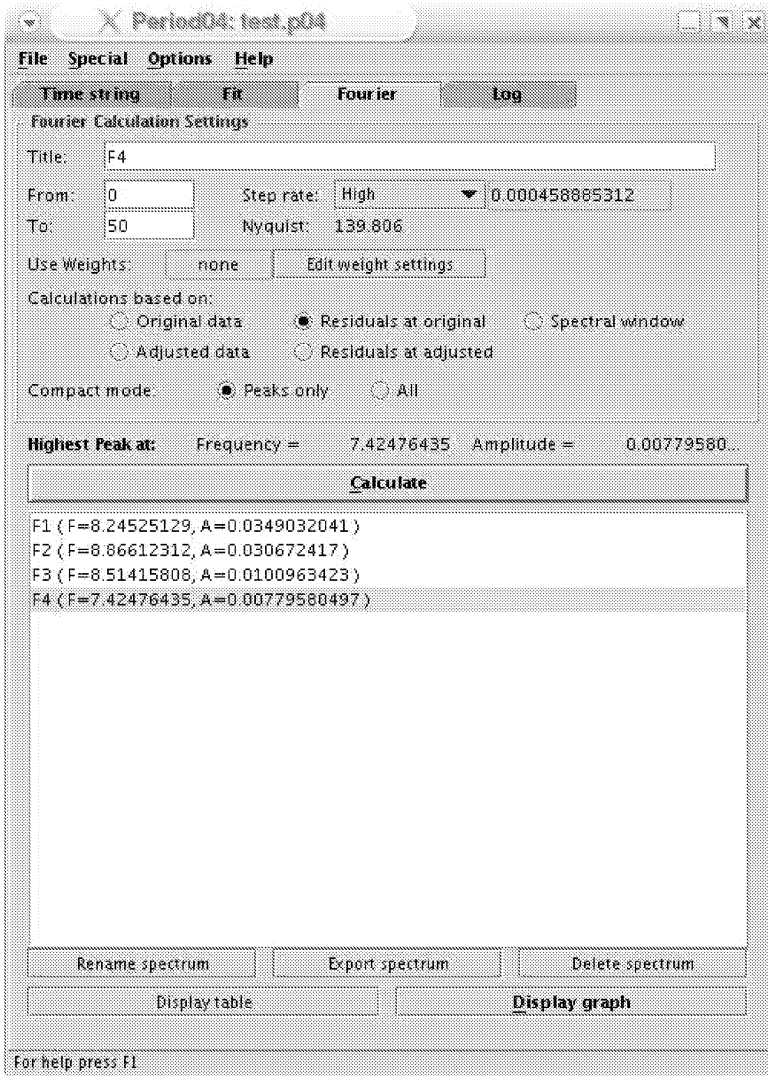


Figure 14: The 'Fourier' tab.

The Fourier calculation settings panel

- **Title**
Defines the name of the Fourier spectrum.
- **From / To**
Defines the frequency range for the spectrum.

- **Step rate**

Defines the accuracy of the frequency grid for the Fourier calculation. Three default options for the step rate quality are available and can be selected by the combo-box: High, Medium and Low. In order to set a user-defined value, select 'Custom' and type the desired value into the input field next to the step rate combo-box.

Please note: The smaller the step rate the longer the calculation will take.

- **Nyquist**

Displays the Nyquist frequency for the time string that is currently selected. This value should be a good estimate for the upper frequency limit due to the sampling pattern for the current data set. The algorithm estimates the average time gap between neighboring points while ignoring large gaps.

- **Use weights**

Displays a string that indicates which weights are being used for the Fourier calculation. If no weights are used 'none' will be displayed.

1	use the weights assigned to the substrings of attribute #1
2	use the weights assigned to the substrings of attribute #2
3	use the weights assigned to the substrings of attribute #3
4	use the weights assigned to the substrings of attribute #4
p	use point weight
d	use deviation weight

- **Edit weight settings**

Opens the weight-selection dialog.

- **Calculations based on**

Defines the type of data to be used for the calculation: 'Original data', 'Adjusted data', 'Residuals at original' or 'Residuals at adjusted'. If 'Spectral window' is chosen the program will calculate the spectral window which is centered at zero frequency and reflects the pattern caused by the structure of gaps in the time string.

- **Compact mode**

The output of the Fourier calculation can be quite extensive. To reduce the output 'Peaks only' can be selected. In this case only local maxima and minima are saved. If 'All' is selected, all data points of the spectrum are stored.

To start the calculation based on the settings in the Fourier Module either press the button 'Calculate' or type the shortcut 'Alt+C'.

The Fourier list

All calculated Fourier spectra are listed in the Fourier list box. For every spectrum the title of the spectrum and, in parentheses, the frequency and amplitude of the highest peak is given. By selecting a spectrum the settings for that calculation will be loaded and displayed.

The buttons below the list provide the following functions:

- **Rename spectrum**
Change the title of the highlighted Fourier spectrum.
- **Export spectrum**
Save the data points of the highlighted Fourier spectrum into a file. In order to export a set of spectra the Data Manager should be used.
- **Delete spectrum**
Erase the highlighted Fourier spectrum.
- **Display table**
Show the table of data points for the highlighted Fourier spectrum.
- **Display graph**
Show the highlighted Fourier spectrum as a plot on the monitor.

Please note:

The functions of these buttons are also accessible by a pop-up menu.

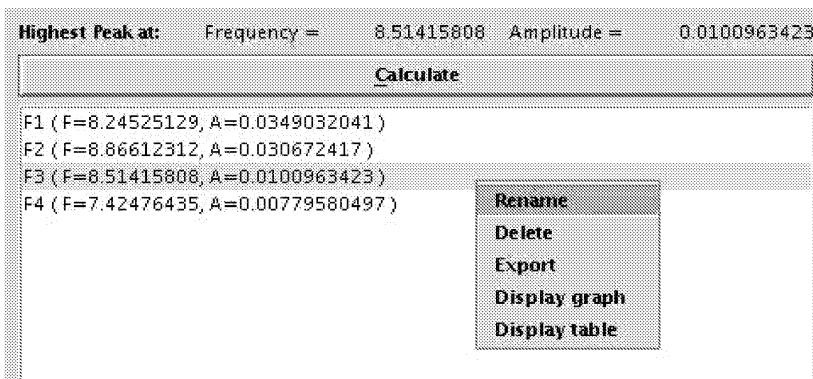


Figure 15: The pop-up menu for the Fourier list.

2.7 The 'Log' tab

Period04 logs all actions taken. It is possible to edit, print or save the log.

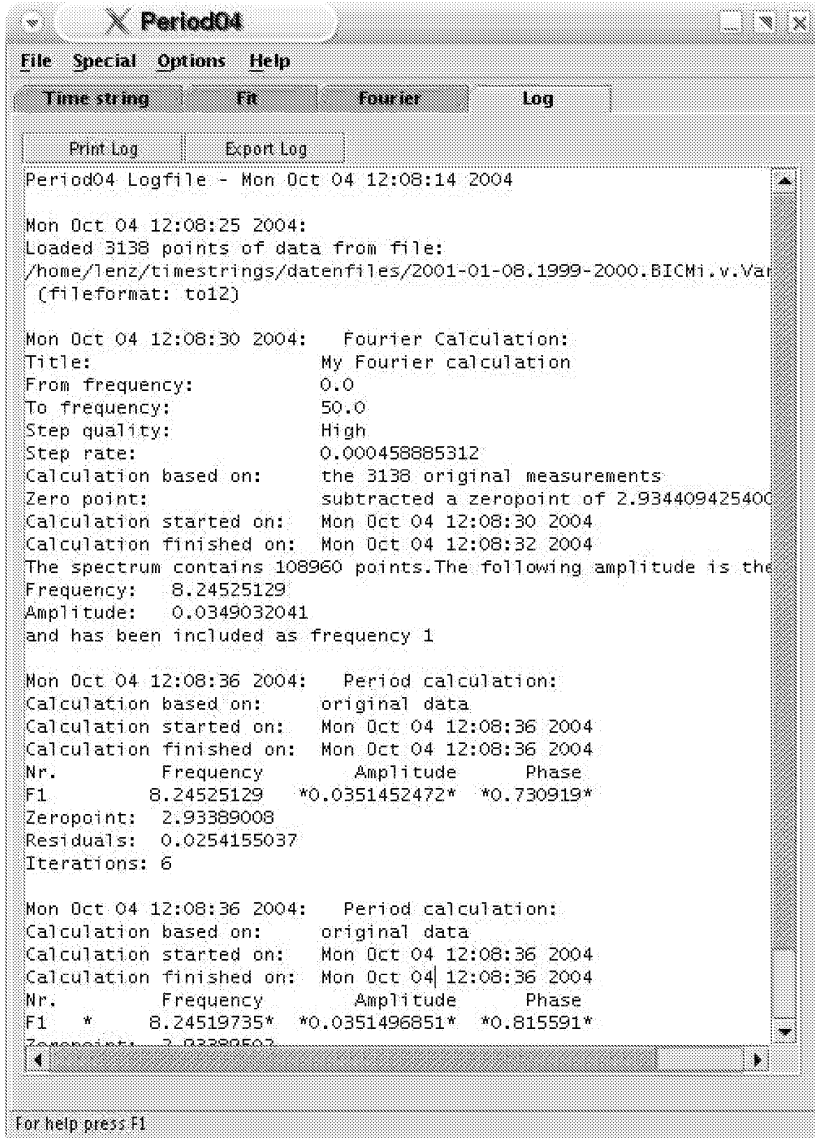


Figure 16: The 'Log' Folder

2.8 Dialogs

2.8.1 The 'Weight selection' dialog

In the 'Weight selection' dialog the user selects the weights that should be used for Fourier and least-squares calculations. Multiple selections are possible. See 'Using weights' (section 4.4.1) for a detailed description of setting weights.

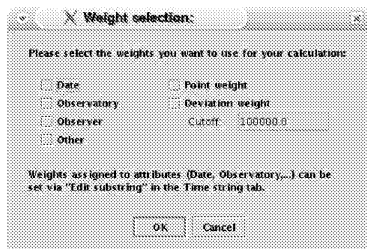


Figure 17: The 'Weight selection' dialog

Period04 supports 3 types of weights:

- **weights assigned to the substrings of an attribute**

If you decided to give your substrings different weights in one or several of the four attributes and you want to include them in the calculations, then select the appropriate attribute weight.

- **point weight**

If you read in a point weight for each of your data points and want to use them in your calculations, then select this weight.

- **deviation weight**

If this option is active the data points will be weighted based on their residual value. 'Cutoff' defines a limit residual value. If the residual of the data point is within this limit, then its weight is set 1.0, otherwise the weight will be calculated based on the residual and the cutoff value.

2.8.2 The 'Subdivide time string' dialog

To split the time string into subgroups based on times of measurements select 'Subdivide time string' in the 'Special' menu. Period04 offers two alternative ways of dividing a time string into substrings. The dialog box prompts the user to choose the desired type of subdivision:

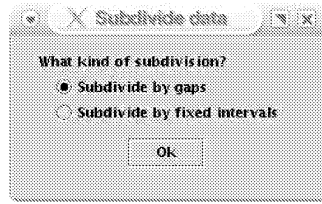


Figure 18: The 'Subdivide data' dialog

- **Subdivide by gaps**

The program will search for time gaps between consecutive points that are larger than a user-defined value. The data set is then subdivided by these gaps.

- **Subdivide by fixed intervals**

If you want to divide the time string into substrings using a fixed time interval then select this option.

According to your selection one of the dialogs shown in Figs. 19 and 20 will open. Below the dialogs an appropriate time string plot shows the difference between the two kinds of subdivisions applied to one and the same data set:

For a subdivision the following informations are needed:

- **Size of the gap**

Defines the minimum gap size (using the same time unit as your time string). If two consecutive points are separated more than the given value then a subdivision will be made.

- **Start time**

Only data points after this time value will be subdivided. Defaults to the lowest time value of the time string.

- **Time interval**

Defines the length of the interval for the subdivision.

- **Choose the attribute you want to subdivide**

Defines the attribute (column) in which the subdivision should take place.

- **Label prefix**

The final labels of the substrings are constructed in the following way:
 [prefix] + [average time of the substring]
 Here you can define this prefix.

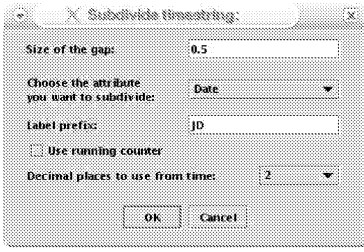


Figure 19: Subdivide by gaps



Figure 20: Subdivide by fixed intervals

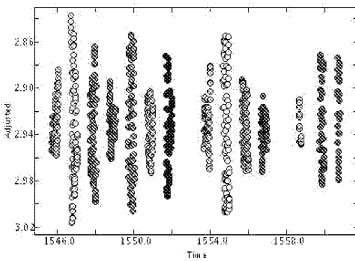


Figure 21: An example for 'Subdivide by gaps'

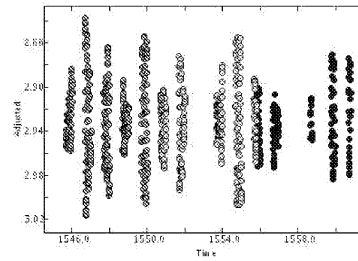


Figure 22: An example for 'Subdivide by fixed intervals'

- **Use running counter**

If this option is selected the program constructs the final label of the substrings in the following way:

[prefix] + [a running counter]

- **Decimal places to use from time**

The number of digits that will be used for the labels of the substrings.

2.8.3 The 'Combine substrings' dialog

This is the inverse operation to 'Subdivide time string' (section 2.8.2). In order to combine a number of substrings first highlight the substrings you want to join. Then open the 'Combine substrings' dialog (Special / Combine substrings).

Two values have to be defined:

- **Attribute**

Select the attribute in which the substrings should be combined.

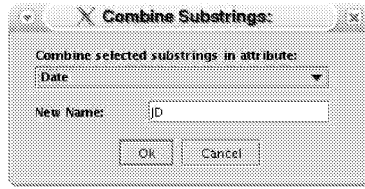


Figure 23: The 'Combine substrings' dialog.

- **New name**

Enter the name for the resulting substring in this field.

2.8.4 The 'Show time structuring' dialog

This dialog displays some information on the structure of the time string. For every substring of the selected attribute the following data are given:

- Start / End time
- Length
- Mean time
- Number of points that belong to the substring

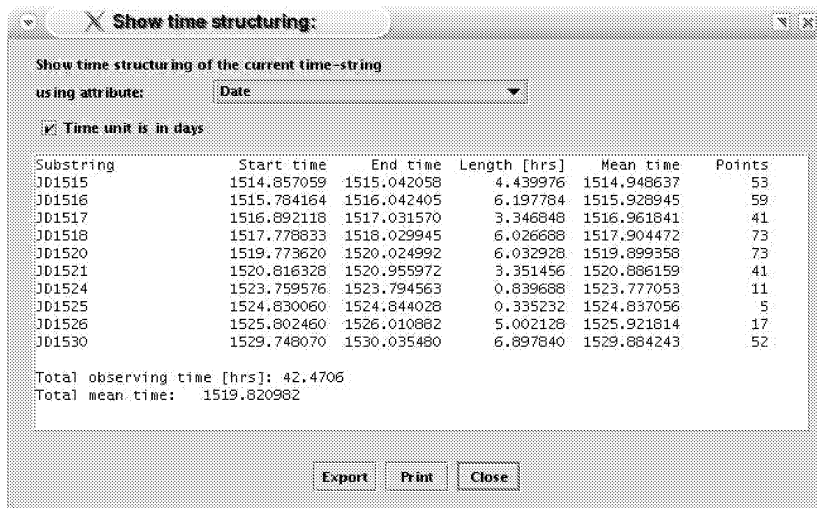


Figure 24: The 'Show time structuring' dialog.

Finally the total observing time and the total mean time of the time string are given. If 'Time unit is in days' is selected, the length of the substrings and the total observing time will be converted into hours, otherwise they will be given using the same time unit as your time string.

The content of the text area can be printed and saved to a file by clicking on the appropriate button at the bottom of the dialog.

2.8.5 The 'Calculate specific Nyquist frequency' dialog (available in expert mode only)

Sometimes it is useful to calculate the Nyquist frequency based on data points within a specified time range. To open the dialog choose 'Calculate specific Nyquist frequency' from the 'Special' menu.

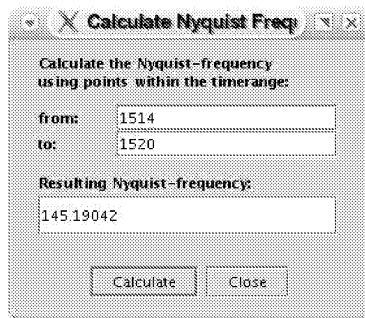


Figure 25: The 'Calculate Nyquist frequency' dialog.

Enter the desired time range and press 'Calculate' to get the appropriate Nyquist frequency.

2.8.6 The 'Adjust time string' dialog

It might occur that your substrings have marginally different zero-point offsets in magnitude/intensity. This can be caused by different instrumentation, or different observational conditions for these substrings.

Zero-point variations entail additional noise in the low frequency domain. To reduce this noise source, one has to adjust the zero-point offsets. This can be done through the 'Adjust time string' dialog.

Before you open the dialog, however, you should calculate a fit as this routine uses the residuals to calculate the zero-point offsets. Select the appropriate

Label	Adjusted	Sigma(Adj.)	Points	Adjusted
J01515	0.002074	0.047733	53	yes
J01516	-0.008261	0.078920	89	yes
J01517	-0.001416	0.019444	41	yes
J01518	0.002736	0.062429	73	yes
J01520	-0.000877	0.029706	73	yes
J01521	0.006407	0.069642	41	yes
J01524	-0.050526	0.070907	11	yes
J01525	0.018678	0.019042	5	yes
J01526	0.021541	0.052589	17	yes
J01530	-0.005491	0.029403	52	yes
J01531	-0.006892	0.054827	50	yes
J01532	-0.008032	0.059793	24	yes
J01533	-0.002754	0.019903	67	yes
J01534	0.005710	0.068429	69	yes

Figure 26: The 'Adjust time string' dialog.

attribute to show the set of given substrings. If weights should be used to calculate the average and the sigma values then select 'Use weights'.

In the list several columns are shown:

- **Label**
The name of the substring.
- **Observed or Adjusted**
Shows the mean value of Observed or Adjusted, respectively.
- **Sigma(Obs./Adj.)**
Shows the deviation of Observed or Adjusted.
- **Points**
The number of points that belong to the given substring
- **Adjusted**
If this column contains the entry 'Yes' some or all points of the specific substring have already been adjusted.

In order to adjust the data, select the substrings and press 'Adjust'. The result will be displayed. You may export or print the content of the text box by pressing the appropriate button.

Please note:

Remember to select 'Adjusted data' for all further calculations!

2.8.7 The 'Set default label for deleted points' dialog

By default Period04 does not delete points directly, but adds them to a substring labeled as 'deleted' in the attribute 'Other'. As the user might prefer other settings, the label and the position (that is the attribute) can be changed using this dialog. To open the dialog select 'Set default label for deleted points' in the 'Special' menu.

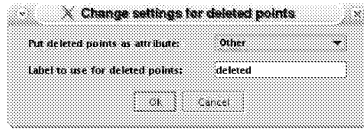


Figure 27: The 'Set default label for deleted points' dialog.

- **Put deleted points as attribute**

Defines in which attribute the substring containing the deleted points will appear.

- **Label to use for deleted points**

Defines the default name for the substring that contains the deleted points.

After pressing 'OK' the new settings will take effect.

2.8.8 The 'Relabel data point' dialog

The 'Relabel data point' dialog appears through a click with the right mouse button on a data point in a time string plot. It is also accessible via the pop-up menu of the time string data table.

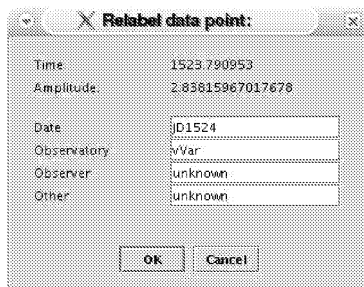


Figure 28: The 'Relabel data point' dialog.

Using this dialog it is possible to change the labels for the chosen point in each attribute. For clarification: the label refers to the name of the substring that includes this point.

2.8.9 The 'Edit substring' dialog

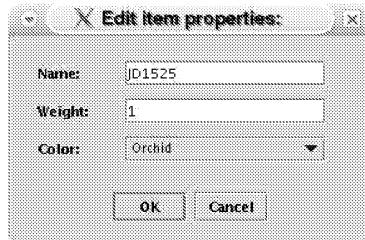


Figure 29: The 'Edit substring' dialog.

The 'Edit substring' dialog can be accessed through the 'Edit substring' buttons on the 'Time string' tab or by using the pop-up menu of the attribute lists. This dialog (Fig. 29) shows the current properties (name, weight and color) of the substring.

Name refers to the label of the substring that currently contains this point. **Weight** assigns the given weight to all points of the selected substring. See 'Using weights' (section 4.4.1) for more information on using weights for calculations. **Color** defines the color of this substring to be used for plots.

2.8.10 The 'Calculate epoch' dialog

To calculate the epochs close to a given time open 'Calculate epoch' in the 'Special' menu. Please note that this calculation is based on the last fit.

It is possible to calculate the time of either

- Maximum light (maximum intensity, respectively)
- Minimum light (minimum intensity, respectively)
- Zero point, the time when the fit crosses the average of the fitted function (1/4 period before the maximum light).

Note that the program already knows whether you are using magnitudes (maximum light at minimum value) or intensities.

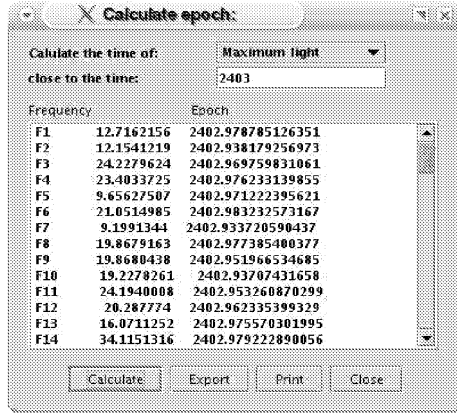


Figure 30: The 'Calculate epoch' dialog

The values for the epoch will be evaluated close to a given time, that has to be entered into the respective input field.

After pressing 'Calculate', the results will be displayed in the text box. The first column is the frequency number, the second column shows the value for the frequency and finally, in the last column the time of the epoch is displayed. You may export or print the content of the text box by pressing the appropriate button at the bottom of the dialog.

2.8.11 The 'Recalculate residuals' dialog

For the purpose of recalculating the residuals using an other zero-point, select 'Recalculate residuals' in the 'Special' menu.



Figure 31: The 'Recalculate residuals' dialog

Enter a new zero-point value into the input field and press 'OK' to start the calculation.

2.8.12 The 'Predict signal' dialog

If you want to calculate the signal at a given time, open the 'Predict signal' dialog (Special / Predict signal).

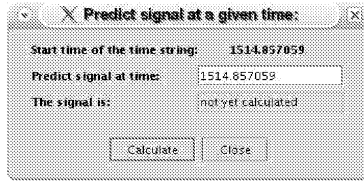


Figure 32: The 'Predict signal' dialog

The dialog displays the start time of the currently selected time string. Below this line a specific time can be entered at which the signal will be calculated based upon the last fit. After pressing 'Calculate' the result will be shown.

2.8.13 The 'Create artificial data' dialog

Period04 also supports the creation of equally spaced artificial data. If desired even a periodic time shift can be included. You may also refer to 'Creating artificial data' (section 4.1.3) for a step-by-step guide about how to use this feature.

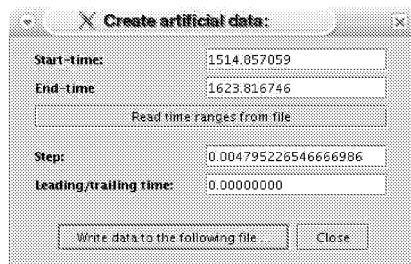


Figure 33: The 'Create artificial data' dialog

- **Start-time / End-time**

Defines the time range for which data should be generated.

- **Read time ranges from file**

Press this button to read in multiple time ranges from a file. Such a file should contain two columns: in the first column the start times should be given and in the second column the respective end times.

- **Step**

Period04 will create data points that are equally spaced in time. This field defines the step size in time.

- **Leading/trailing time**

If this option is non-zero the time range(s) will be extended by the given value.

Before the generation of the artificial data set starts, a file name has to be specified in which the output will be written. Press 'Write data to the following file' and define the name and the path of the file in the file-selector dialog. If the file already exists the user will be prompted whether he wants to append the data to the existing file or to replace the file.

2.8.14 The 'Set alias-gap' dialog

The alias-gap dialog allows for the definition of the step size for frequency adjustments. This value will be added or subtracted from a frequency when you enter a trailing '+' or '-' to the respective frequency in the frequency list of the Fit Module.

To open this dialog select 'Set alias-gap' from the 'Special' menu. After changing the old value and pressing 'OK' the new settings will take effect.

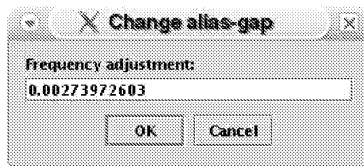


Figure 34: The 'Set alias-gap' dialog

2.8.15 The 'Show analytical uncertainties' dialog

This dialog displays the parameter uncertainties calculated from formulae which assume an ideal case. See Breger et al. (1999) for the derivation of uncertainties for frequency, phase and amplitude based on a mono periodic fit. If cross terms can be neglected the equations can also be applied for each pulsation frequency separately. See 'Estimation of uncertainties' (section 4.3.4) for more information.

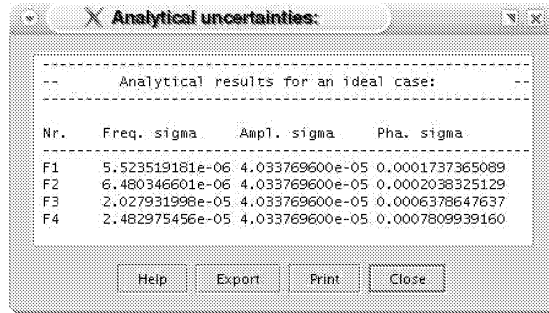


Figure 35: The 'Show analytical uncertainties' dialog

You may export or print the content of the text area by pressing the appropriate button at the bottom.

Please note:

This option is only available when the standard fitting formula is being used.

2.8.16 The 'Improve special' dialog

The 'Improve special' dialog appears when you press the 'Improve special' button in the Fit Module.

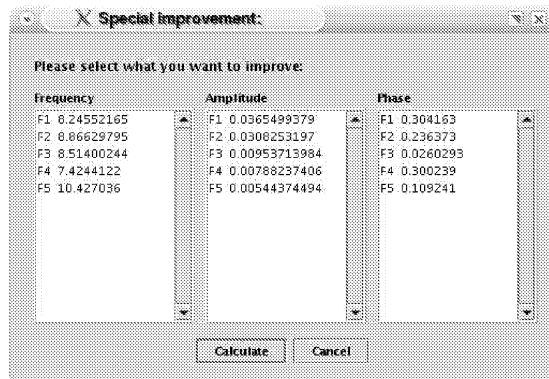


Figure 36: The 'Improve special' dialog

The dialog consists of three list boxes that contain all currently available frequency, amplitude and phase parameters. Select the parameters you want to improve and press 'OK' to start the least-squares calculation. Unselected parameters will be kept fixed.

2.8.17 The 'Calculate amplitude/phase variations' dialog

This dialog opens up when you press the 'Calculate amplitude/phase variations' button in the Fit Module. It offers the possibility to calculate amplitude and/or phase variations. Please also see 'Calculating amplitude/phase variations' (section 4.3.2) for a step-by-step guide on how to use this tool.

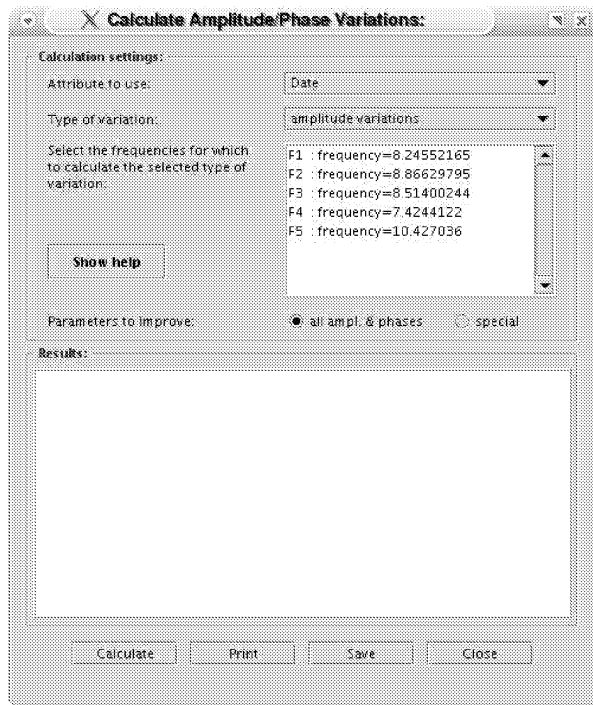


Figure 37: The 'Calculate amplitude/phase variations' dialog

Calculation settings:

- Attribute to use:**
 Defines the attribute that contains the time string subdivision that should be used for the calculation.
- Type of variations:**
 Select either 'amplitude variations', 'phase variations' and 'amplitude and phase variations' here.
- Parameters to improve:**
 By default option 'all ampl. & phases' is selected. That means that for this calculation the frequencies will be kept fixed and all amplitudes and

phases are redetermined. To specify a different selection click on 'special' and make your choice in the selection dialog that will be opened.

Press 'Calculate' to start the calculation using the defined settings. The results will be displayed in the text field. You may print or export the results to a file by clicking the appropriate button at the bottom.

2.8.18 The 'Monte Carlo simulation' dialog

This dialog is shown when you click on Monte Carlo Simulation in 'Goodness of Fit' tab in the Fit Module. It provides an interface for estimating the uncertainties of fit parameters by means of Monte Carlo simulations.

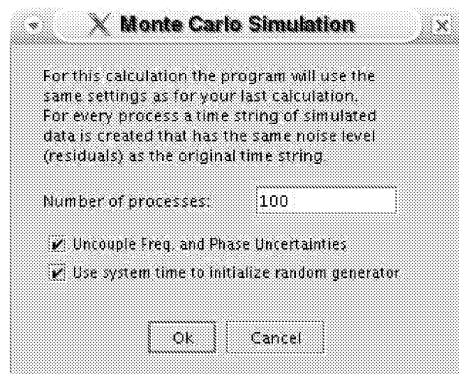


Figure 38: The 'Monte Carlo simulation' dialog

For the Monte Carlo simulation the program generates a set of time strings. Each data set is created as follows:

- The times of the data points are the same as for the original time string.
- The magnitudes (or intensity) of the data points are calculated from the magnitudes predicted by the last fit plus Gaussian noise.

For every data set a least-squares calculation will be made. Based on the distribution of fit parameters the program calculates the uncertainties of the parameters.

- **Number of processes**

A 'process' consists of the creation of time string data and a least-squares calculation to determine the fit parameters. A low number of processes results in a bad estimate of the uncertainties. Therefore, a high number of processes is highly recommended to obtain reliable results.

- **Uncouple Frequency and Phase Uncertainties**

Frequency and phase uncertainties are correlated. If this option is selected the time string will be shifted in time so that the 'average time' is zero. If this condition is fulfilled, the frequency and phase uncertainties are no longer correlated. This check box will only be visible if this option might be useful, that is when both frequency and phase parameters are fitted using the standard fitting formula.

- **Use system time to initialize random generator**

If this option is selected the random number generator that is used to create the time string data sets will be initialized with the current system time.

Please see 'Estimation of uncertainties' (section 4.3.4) for further informations.

2.8.19 The 'Calculate noise at frequency' dialog

In order to check the significance of a detected frequency it is necessary to calculate the signal to noise ratio. For this purpose select 'Calculate noise at frequency' in the 'Special' menu.

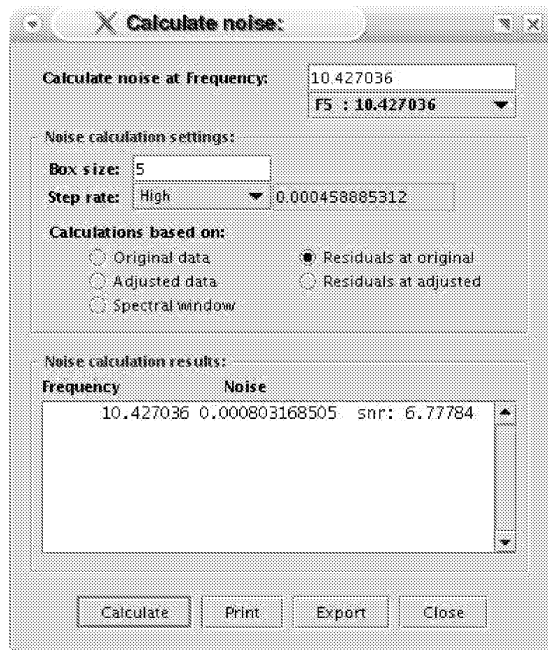


Figure 39: The 'Calculate Noise at Frequency' dialog

- **Calculate noise at Frequency**

Defines the frequency for which the noise should be calculated. The frequencies that are stored in the frequency list in the Fit Module are accessible by the combo-box below the frequency field. By default the last frequency of the frequency list is activated.

- **Box size**

Determines the size of the frequency range to be used for the noise calculation: $[frequency - \frac{boxsize}{2}, frequency + \frac{boxsize}{2}]$

- **Step rate**

Defines the accuracy of the frequency grid for the Fourier calculation. Three default options for the step rate quality are available and can be selected by the combo-box: High, Medium and Low. In order to set a user-defined value, select 'Custom' and type the value into the input field next to the step rate combo-box.

Please note: The smaller the step rate the longer the calculation will take.

- **Calculations based on**

Defines the type of data to be used for the calculation: 'Original' data, 'Adjusted' data, 'Residuals at original', 'Residuals at adjusted' or 'Spectral window'.

Click on 'Calculate' to start the calculation. The results of the noise calculation will be shown in the text field below. If the frequency has been selected via the combo-box then even a value for the signal to noise ratio will be calculated.

You can export or print the content of the text box by pressing the appropriate button.

2.8.20 The 'Calculate noise spectrum' dialog

Period04 also provides a tool to calculate a noise spectrum. The corresponding dialog can be accessed via the Special menu.

This dialog is very similar to the 'Calculate Noise at Frequency' dialog. However, for the noise spectrum the range and the step size have to be defined:

- **Frequency range: from/to**

Defines the frequency range for the noise spectrum.

- **Spacing**

In order to construct a noise spectrum the noise will be calculated for certain frequencies in equidistant frequency steps. The 'spacing' defines the size of these frequency steps.

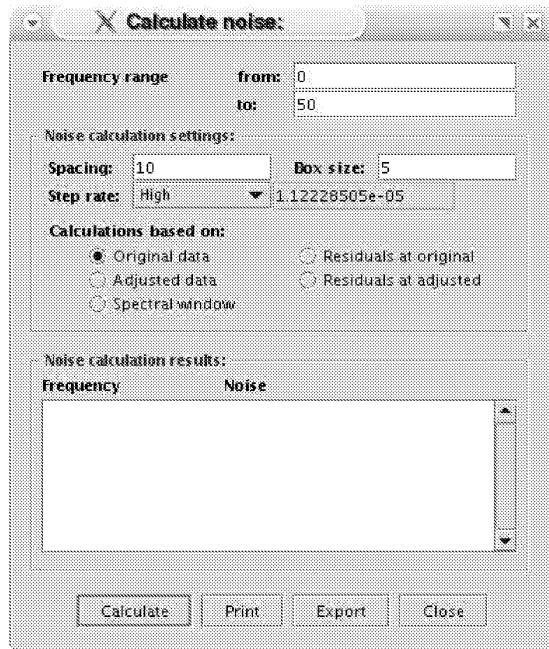


Figure 40: The 'Calculate Noise Spectrum' dialog

Click on 'Calculate' to start the calculation. The resulting noise spectrum data will be displayed in the text box below. To export or print the content of this text box press the appropriate button at the bottom of the dialog.

2.9 Plots

Visual inspection of the data is very important. Period04 supports plotting on the monitor of time string data, Fourier data and phase plots.

The menu bar for plot windows generally contains the following commands:

- The **Graph** menu:
 - **Print Graph**
Opens a printer dialog for printing the plot using the current view-port.
 - **Export Graph As (EPS/JPG)**
Save the current plot as an image in eps or jpg format.
 - **Close**
Close the plot window.

- The **Colors** menu (not available for Fourier plots)
Every attribute has substrings which are assigned to a color. Using this menu option it is possible to switch between the different coloring of the four attributes.
- The **Data** menu (not available for Fourier plots)
Here you can select the type of data to be plotted: 'Observed', 'Adjusted', 'Residuals at observed' and 'Residuals at adjusted'.
- The **Zoom** menu:
 - **Display all**
Resets the zoom.
 - **Select viewport**
Opens a dialog to define the graph ranges.
 - **Freeze viewport** (available for time string plots only)
If this option is selected the current viewport will be maintained, unaffected of changes in the selection of substrings. Zooming functionality is not affected.
 - **Back**
Undo the last zooming action.
- The **Help** menu
provides a link to the help page for the appropriate plot.

The status bar

In the status bar of plot windows the current coordinates of the cursor will be displayed, provided that the mouse cursor is situated within the plot domain.

Editing plots

The Scientific Graphics Toolkit that is being used for the plots allows to edit some properties of the design:

- **Labels**
Change the text, font, color or position of the plot title and/or the axis titles.
- **Axes**
Change label font, tic properties or the range.

To open the appropriate dialog, make a right-click on the appropriate label or axis to activate it, then a left-click to open the dialog.

2.9.1 Time string plots

To plot the currently selected time string, press the button 'Display graph' in the 'Time string' tab.

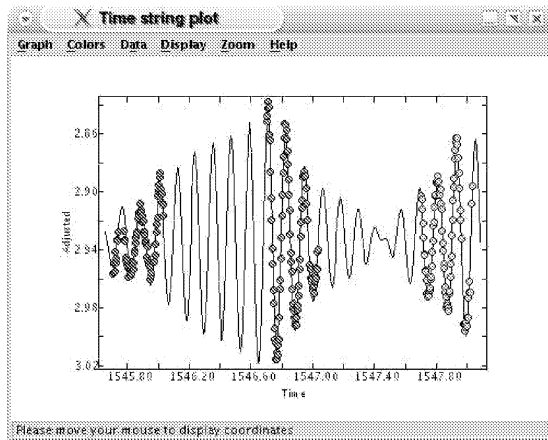


Figure 41: An example for a time string plot.

In this mode the menu bar is extended by an additional menu:

- The **Display** menu

In this menu the 'Display header' option can be selected. If this option is activated a header will be shown providing some information on the current fit (number of frequencies, residuals, ...).

Editing the contents of time string plots:

- **Relabel points**

If you want to change the substring a particular point belongs to, click on that point with the right mouse button. The 'Relabel data point' dialog (section 2.8.8) will be shown. To prevent a wrong identification, the dialog does only appear when the point is well separated from other points.

- **Deleting points**

There are two ways to delete points:

- Press 'Ctrl' and right-click on the point you want to delete.
- Draw a rectangle using the right mouse button. In contrast to zoom-rectangles this rectangle is colored red. After releasing the button the user will be prompted whether he wants to delete the points within the rectangle or not.

2.9.2 Phase plots

To show the phase plot press the 'Phase diagram' button in the Fit Module. By default the first found inactive frequency is being used for the plot. If no inactive frequency can be found a default frequency value of 1.0 is chosen. Please note: this option is not available within the periodic time shift mode.

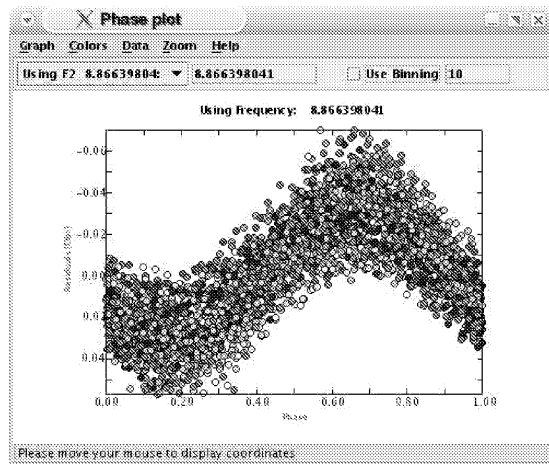


Figure 42: A typical phase plot.

Phase plots provide the two additional options which are accessible via the 'File' menu:

- **Export phases**
Opens a time string export dialog which allows for saving the phases along with other data.
- **Export binned phases**
Same as 'Export phases' apart from the fact that binned phases are exported instead of phases.

The frequency panel

- **The frequency combo-box**

Defines the frequency that is used for the plot. The combo-box contains all inactive frequencies that have been found in the Fit Module. To use a user-defined frequency value select 'Other Frequency' and type the frequency into the input field next to the combo-box.

- **Use binning**

If this option is selected the data will be averaged for discrete phase ranges. The input field next to the check-box defines the number of bins.

2.9.3 Fourier plots

To plot the currently selected Fourier spectrum, press the button 'Display graph' spectrum in the Fourier Module.

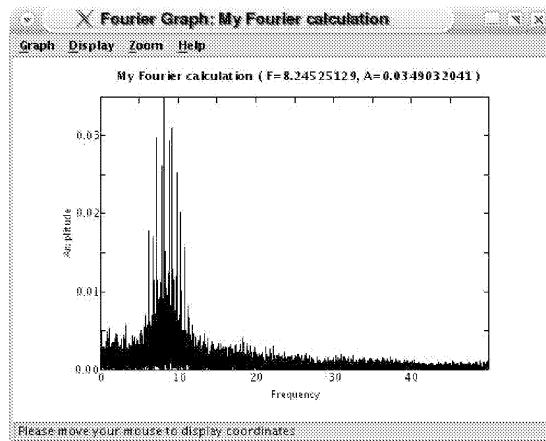


Figure 43: A common Fourier plot.

In the Fourier mode the menu bar is extended by one item:

- The **Display** menu

- **Display Power**

If this option is selected power will be plotted instead of amplitude.

- **Display header**

If this check-box is activated a header will be displayed containing the title of the spectrum and the values of the highest peak.

2.10 Tables

Period04 allows to inspect the data in table format too.

To display the time string table, press 'Display table' in the 'Time string' tab. The table lists all selected data points along with information on residuals, weights and the affiliation to substrings.

Time	Observed	Adjusted	Calculated
1514.857059	2.968989406	2.968989406	2.97435405537416
1514.860669	2.968350358	2.968350358	2.97135073627705
1514.864125	2.965715164	2.965715164	2.96731494328259
1514.867572	2.960693923	2.960693923	2.96233574836118
1514.871085	2.95474042	2.95474042	2.95648770577658
1514.874698	2.936493462	2.936493462	2.94989875552346
1514.878140	2.93419521	2.93419521	2.94329985551779
1514.881596	2.9264570	2.9264570	2.9366346790495
1514.885051	2.9226181	2.9226181	2.9301049579324
1514.888649	2.921320449	2.921320449	2.92368389890982
1514.892099	2.908883781	2.908883781	2.91807955566758
1514.895544	2.907379956	2.907379956	2.91318076020498
1514.898992	2.903604481	2.903604481	2.9091009045027
1514.902587	2.900184459	2.900184459	2.90582365386429
1514.906038	2.901122942	2.901122942	2.90367540181286
1514.909488	2.904916203	2.904916203	2.9025282444302
1514.912946	2.900415232	2.900415232	2.90237195298652
1514.916543	2.907036402	2.907036402	2.90322000448438
1514.919986	2.912853474	2.912853474	2.90492536720073
1514.923429	2.913320503	2.913320503	2.90741056822631
1514.926887	2.918366737	2.918366737	2.91057840294403

Figure 44: The time string table.

Within the Fourier Module it is also possible to inspect the values for frequency, amplitude and power of a Fourier spectrum in form of a table. To open this table select the respective Fourier spectrum and click on the button 'Display table'.

As the tables are available only for informative purposes the table itself cannot be edited.

The menu bar for table windows contains the following entries:

- The **Table** menu
 - **Print Table**
Use this command to print the complete table.
 - **Export Table**
Save the content of the table to a file.
 - **Close**
Close the table window.

Frequency	Amplitude	Power
0.0	1.9270051219E-14	3.7133487398288336E-
4.58885312327E-4	9.80911749901E-5	9.621878610938419E-9
9.17770624653E-4	1.93989083294E-4	3.763176443724647E-8
0.00137665593698	2.85595034203E-4	8.156452356141274E-8
0.00183554124931	3.70998747587E-4	1.3764007071112254E-7
0.00229442655163	4.48570716207E-4	2.012156874384609E-7
0.00275331187396	5.1705230945E-4	2.673430907075785E-7
0.00321219718629	5.75642524097E-4	3.313643155487652E-7
0.00367108249861	6.24079359081E-4	3.894750464309517E-7
0.00412896781094	6.6271159752E-4	4.391866614875105E-7
0.00458885312327	6.9252357297E-4	4.796287675976315E-7
0.00504773843559	7.15298103885E-4	5.116513774214762E-7
0.00550662374792	7.3328598382E-4	5.377083340668653E-7
0.00596550906025	7.49352234139E-4	5.615287708091107E-7
0.00642439437257	7.66556331726E-4	5.876086097092214E-7
0.0068832796849	7.87766842703E-4	6.205765984622532E-7
0.00734216499723	8.1517275914E-4	6.645066272439203E-7
0.00780105030955	8.49857643819E-4	7.222580147575824E-7
0.00825993562188	8.91586661657E-4	7.949267756013084E-7
0.0087188209342	9.38873322182E-4	8.814831151050656E-7
0.00917770624653	9.892694335E-4	9.786540120574111E-7
0.0096266155686	0.0010527528136E-	1.081866131651615E-

Figure 45: The data table for a Fourier spectrum.

- The **Help** menu
Provides a link to the appropriate help page.

Within time string tables a pop-up menu is available:

- **Relabel point**
Gives access to the 'Relabel data point' dialog (section 2.8.8) for the selected time point.
- **Delete point**
Deletes the currently highlighted time point.

2.11 Period04 preferences

A new feature of Period04 is the preferences file. It is located in the user directory and it is named '.period04-pref'. At start-up Period04 searches for the preferences file and reads in the default settings as defined in the file.

If the file is not found, the program shows a message reporting the problem and creates a new file. The program also checks the file for defects. If the file seems to be damaged or incomplete Period04 will ask the user if he wants to delete the preferences file and to generate a new one or to proceed using the internal default values.

By editing the '.period04-pref' file the user can set the following values:

- default program mode (standard mode or expert mode)

- lower / upper bound for the default Fourier frequency range
- default compact mode for Fourier calculations
- default alias-gap value
- default scale (magnitudes or intensity)
- default names for the set of attribute names
- default file-format for time string files

The user may also add own comments provided that the line starts with '#'. This character advises Period04 not to read that line.

The default preferences file in detail:

```
#
# .period04-pref
#
# This is the Period04 preferences file. You can set
# your personal settings by replacing the default values.
# If this file is not found, Period04 creates a new one
# using its original settings.
#
#-----
PROGRAM_MODE                                DEFAULT
#
# start the program in the given mode
# possible values: DEFAULT
#                   EXPERT
#-----
DEFAULT_FOURIER_LOWER_FREQUENCY             0.0
#
# defines the default lower boundary
# of the frequency range for
# Fourier calculations
#-----
DEFAULT_FOURIER_UPPER_FREQUENCY            50.0
#
# defines the default upper boundary
# of the frequency range for
# Fourier calculations
#-----
DEFAULT_FOURIER_COMPACT_MODE                ALL
#
# defines the default setting for
# Fourier calculations:
#   ALL = all data points of a Fourier
#         spectrum are saved
#   PEAKS_ONLY = only the maxima and
#               minima of the spectrum are saved
#-----
DEFAULT_ALIAS_STEP                          DEFAULT
#
# defines the default alias step rate:
#   DEFAULT = (1./365.)
#   a user-defined number
```

```

#-----
DEFAULT_SCALE_SETTING          MAG
#
# defines the default scale setting:
#   MAG = magnitudes
#   INT = intensity
#-----
DEFAULT_NAME_SET[0]           Date
DEFAULT_NAME_SET[1]           Observatory
DEFAULT_NAME_SET[2]           Observer
DEFAULT_NAME_SET[3]           Other
#
# this defines the default attribute names
#-----
DEFAULT_TIMESTRING_FILE_FORMAT  AUTO
#
# this defines the default file format for
# reading in time strings.
#   AUTO = try automatic determination
# You may also enter a user-defined string,
# composed of the following letters:
#   t ... time
#   o ... observed
#   a ... adjusted
#   c ... calculated
#   w ... point weight
#   r ... residuals(observed)
#   R ... residuals(adjusted)
#   1 ... attribute #1
#   2 ... attribute #2
#   3 ... attribute #3
#   4 ... attribute #4
#   5 ... weight(attribute #1)
#   6 ... weight(attribute #2)
#   7 ... weight(attribute #3)
#   8 ... weight(attribute #4)
#   i ... ignore

```

2.12 The expert mode

If the expert mode of Period04 is activated, additional tools are available such as:

- the Data Manager (see section 2.13)
- the possibility to calculate fits considering periodic time shifts (see section 4.3.3)
- a tool to calculate the Nyquist frequency using specific time-ranges (see section 2.8.5)

The expert mode can be activated by selecting the check-box 'Expert mode' in the 'File' menu. The expert mode setting is being saved in every Period04

project file and will be reactivated automatically when the project is opened again.

It is possible to start Period04 in the expert mode by default. For this purpose you have to edit the Period04 preferences file which is located in your user directory. Change the setting for 'PROGRAM_MODE' from 'DEFAULT' to 'EXPERT' as shown in this excerpt:

```
PROGRAM_MODE                EXPERT
#
# start the program in the given mode
# possible values: DEFAULT
#                          EXPERT
```

From now, the program will always start in expert mode right away.

2.13 The Data Manager (expert mode only)

The Data Manager is a tool that combines all import and export data options Period04 is capable of. It can be accessed via the menu bar (File / Manage data) or using the shortcut 'Ctrl+M', provided that the expert mode is activated (see section 2.12).

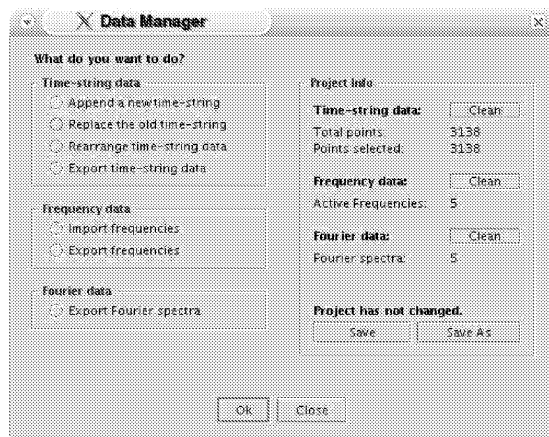


Figure 46: The 'Data Manager'

The Data Manager dialog is divided into 2 columns: the left column provides options for import, export and rearrangement of data. The right column shows some information on the current project. The project information panel will hide if an option in the left column has been selected. Instead, an other

panel will be displayed, showing additional options for the selected action.

The project information panel:

- **Time string data:**

Clean	Delete the complete time string.
Total points	The total number of time points.
Points selected	The number of currently selected time points.

- **Frequency data:**

Clean	Delete all frequencies.
Active frequencies	The number of selected frequencies.

- **Fourier data:**

Clean	Delete all Fourier spectra.
Fourier spectra	The number of spectra in the Fourier list.

- **Project:**

Save	Save the current project.
Save as	Save the current project using an other name.

If the project has changed since the last backup, a red warning label will be displayed.

Options related to time string data:

- **Append a new time string:**

Choose this option if you want to add time string data to the current project.

- **Replace the old time string:**

Erases the current time string and reads in a new time string. This option does also provide the possibility prevent the automatic deletion of current frequency data, Fourier spectra and the log.

- **Rearrange time string data:**

This option makes it possible to interchange time string data columns. You may choose one of the following actions:

- replace 'Observed' by 'Residuals(Observed)'
- replace 'Observed' by 'Residuals(Adjusted)'

- replace 'Observed' by 'Calculated'
- replace 'Observed' by 'Adjusted'

By default the 'Adjusted' column will also be replaced by the chosen values whereas the 'Calculated' values will be set zero.

- **Export time string data:**

Choose this option if you want to export time string data from the current project to a file.

Options related to frequency data:

- **Import frequencies:**

Import frequency data from a file. Make sure that the file is formatted as shown in this example:

F1	12.716215	22.38070	0.953766
F2	12.154121	4.034121	0.146566
F3	24.227962	4.264320	0.688949
F4	23.403372	3.816048	0.002060
F5	(9.6562750	3.649441	0.998882)

Unselected frequencies should be placed within parentheses.

- **Export frequencies:**

Export frequencies from the current project to a file.

Options related to Fourier data:

- **Export Fourier spectra:**

This option makes it possible to export either all or a specific selection of Fourier spectra. According to the selection of the user, the program will name the files either using the titles of the spectra or a composition of a prefix and a running number.

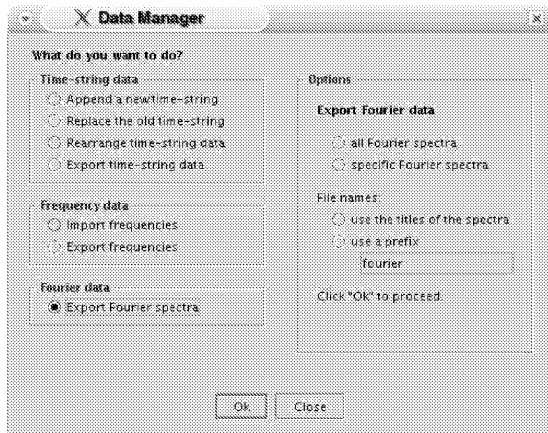


Figure 47: The 'Export Fourier spectra' interface.

2.14 Overview of Shortcuts:

General Shortcuts:

Ctrl + N	Create a new project
Ctrl + O	Load an existing project
Ctrl + S	Save the active project
Ctrl + T	Import/append a time string
Ctrl + A	Adjust data
Ctrl + F	Import a set of frequencies
Ctrl + M	Launches the data manager (available in expert mode only)
Ctrl + W	Open the weight-selection dialog
Ctrl + Q	Quit the program
F1	Launch the Help System

Shortcuts only available in the 'Time string' tab:

Alt + E	Export time string data
Alt + D	Display time string

Shortcuts only available in the 'Fit' tab:

Alt + C	Improve amplitudes and phases
Alt + I	Improve all parameters

Shortcuts only available in the 'Fourier' tab:

Alt + C	Calculate Fourier transformation
Alt + D	Display the selected Fourier spectrum

3. Getting Started

The best way to learn how to use Period04 is by doing. For this reason we created two example time strings which will be processed and discussed in the tutorials below. The data files can be downloaded from the Period04 homepage: <http://www.astro.univie.ac.at/dsn/dsn/Period04/>

3.1 Tutorial 1: A first example

In this tutorial, we will use Period04 to examine a data set and determine the frequencies by using Fourier analyses to give us rough values of the frequencies and the Fit Module to refine these frequencies. Note that the Fourier analysis cannot by itself solve the problem since it is a single-frequency method.

1. Start the program Period04.

You may wish to use the file 'Empty Period04 file.p04' which is part of the downloaded data package. The tab 'Time string' is selected and active. You will see four empty columns.

2. Import the data set.

We will now load the data file. It has the name 'Tutorial1.dat'. Click on the button 'Import time string' (left, near top). A window opens and asks for the location of the data. Find the proper directory on your hard disk and click on the file name. Click on the button 'Import'.

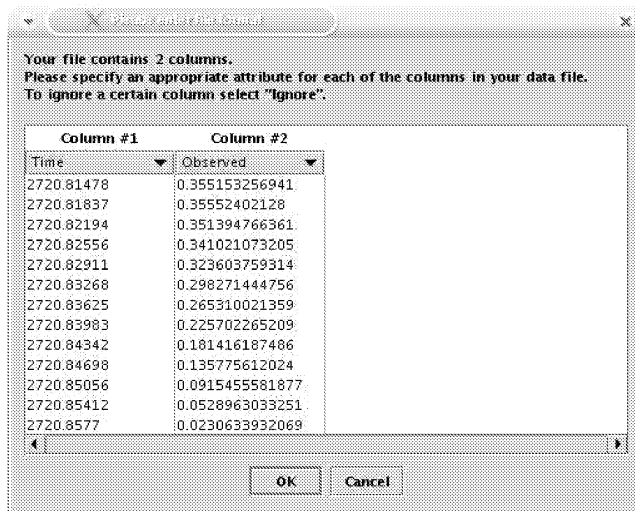


Figure 48: The 'Time string import' dialog.

A window opens and asks for the properties of each column. Since the first data column is the time and the second columns contains the magnitude variations, everything is fine. Click on 'OK'.

(If not, under 'Column #1' etc. you can select the contents of each column.)

You now have 1254 data points loaded with observing times ranging from 2720.81478 to 2740.92739. Do not worry about the 'unknown' labels in each of the four columns: it just means that you have not organized your data into groups.

Save your data now (File, Save Project as) under, say, 'First'. It is now stored as First.p04.

3. Look at the data.

In the same 'Time String' window, click on 'Display Graph' at the bottom right. A new window opens with the light curves of the selected data, which, by default, was all the data. You notice that the data strings are spaced one (or more) days apart.

Let us examine a (any) single night. With your mouse select a part of the data by drawing a rectangle around it. You may wish to increase the scale of your selection by drawing more rectangles. If you make a mistake, open the 'Zoom' dialog (top of 'Time string plot') and use an option.

The single-night data indicates a variation lasting about 0.1d, with non-repetitive light curves. This may already be a sign of multi periodicity. Notice too that within each night, the data are taken about every 0.003d or 5 minutes apart. This figure is approximate because the coverage differs from night to night. The sampling theorem suggests that periods shorter than 10 minutes should not be determined with such a data set. To put it differently, the Nyquist frequency is about $(0.5 * 1/0.003)$ or 167 cycles/day, abbreviated as c/d.

Furthermore, the data were taken one (or more) nights apart with daytime gaps. Consequently, 1 c/d aliasing is expected.

To summarize:

- (a) we suspect that frequencies near 10 c/d exist,
- (b) the Nyquist frequency should be near 167 c/d, and
- (c) 1 c/d aliasing may exist.

4. Perform a Fourier analysis of the data: Spectral Window

Make sure that you have selected all the data. Click on the 'Fourier' tab. A new window opens. Let us now enter all the necessary parameters.

Title: Spectral Window

From: 0

To: 5

(remember that the spectral window is centered on 0 c/d and calculates the pattern caused by the observing gaps).

Use weights: Keep 'none'

Calculations based on: Spectral window

Compact Mode: All

(since there are no huge gaps in the data)

Now press the central button: Calculate.

Let us look at the answers. In the line above the 'Calculate' button, we see that the highest peak occurs at frequency 0 with an amplitude of 1. This has to be the answer for a spectral window.

Click on 'Display Graph' on the bottom right. A plot window opens. You can see the 1 c/d structure. Keep it in mind for the frequency search of the stellar variations. The true frequencies of the star should also show the pattern, but centered on the true frequencies.

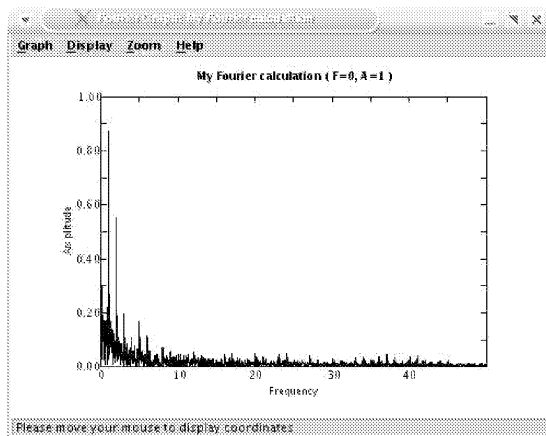


Figure 49: The spectral window.

Close Fourier graph: Spectral Window.

5. **Perform a Fourier analysis of the data: Periodic content of data**

You are still in the Fourier window. If not, click on the 'Fourier' tab. Let us now enter all the necessary parameters:

Title: All data, incorrect zero-point
(the choice of this title will become clear below)

From: 0

Now see the Nyquist Frequency (167.778). Use this.

To: 167

Use weights: Keep 'none'

Calculations based on: Original data

Compact Mode: All

Now press the central button: Calculate.

Now a window opens asking you to select the zero-point shift. It allows you to subtract the average brightness.

(a) INCORRECT OPTION:

Let us pick the incorrect option for the present data set. In the present case, we select 'No'. This means that we assume that the measured average is not the true stellar average - this can indeed happen.

Let us look at the answers. In the line above the 'Calculate' button, we see that the highest peak occurs at frequency 0 with an amplitude of 0.4875. No, this is not the spectral window. It is a consequence of the incorrect zero-point!

Do not include this frequency. Answer 'No' to the question.

Click on 'Display Graph' on the bottom right. A plot window opens. We see two patterns, one centered on the frequency 0, the other one at 10. Let us examine the structure at 0 in more detail: open the 'Zoom' dialog to the top of the plot and use option 'Select viewport'. Enter:

Frequency min: -0.1

Frequency max: 5

Keep the chosen amplitudes. Click 'OK'.

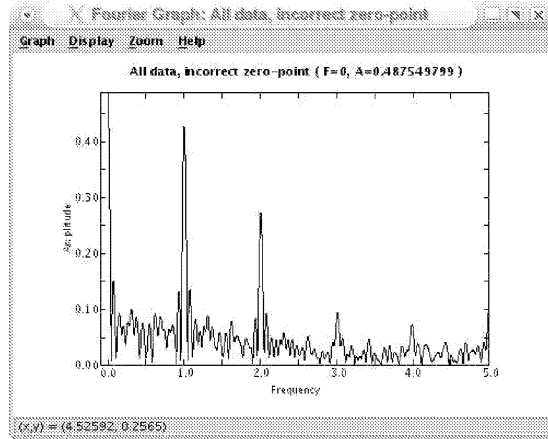


Figure 50: An example for using a wrong zero-point

You see the peak with an amplitude of 0.49 (twice the incorrect zero-point value) near frequency 0. You also see the spectral window pattern associated with this peak (Fig. 50).

Close the graph and redo the Fourier analysis with the correct zero-point.

(b) CORRECT OPTION:

We redo the calculation (calling it 'All data') and say 'Yes'. Now the highest amplitude occurs at 10.0011883 with an amplitude of 0.20124.

Answer the question: 'Do you want to include this frequency?' with 'Yes'. It is now entered in the 'Fit' window.

Look at the Fourier diagram again (button 'Display Graph' at bottom right). A nice pattern of peaks around the frequency 10 is visible. A decision to try out this frequency for a fit appears reasonable. Let us do it.

Close the plot.

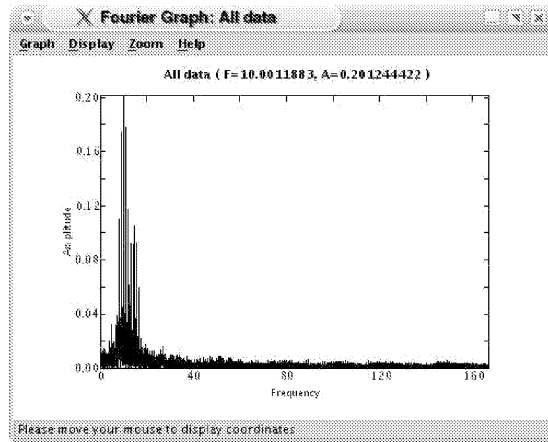


Figure 51: The Fourier spectrum using the correct zero-point

6. A One-frequency fit.

Click on the 'Fit' tab (top). A window opens. You see the previously suggested frequency.

(a) First calculation.

Select the first frequency F_1 by clicking into the square to the left of F_1 . A check mark appears. Click on 'Calculate' at the bottom left. You obtain the following result almost immediately:

Amplitude = 0.202266723 and Phase = 0.95286.

Near the top right you will see: Selected frequencies = 1. Yes, that is true. Zero point: 0.2426. Yes, that is close to the average value already suggested by the program before the Fourier analysis. Residuals: 0.070878. We want to minimize this quantity, but we do not know what the minimum value will be.

(b) Improve the frequency.

This option should be used carefully. Let us apply it (button bottom middle). The frequency becomes 9.99988955, Amplitude = 0.202731263, Phase = 0.501472. More importantly, the residuals have improved slightly.

7. Perform a Fourier analysis of the residuals

Let us see if the residuals contain more periodicities. Click on the 'Fourier' tab.

Title: Residuals, 1 frequency
From: 0
To: 167
Use weights: Keep 'none'
Calculations based on: Residuals at original (Note!)
Compact Mode: All

Now press the central button: Calculate.

A frequency of 14.5008529 and amplitude 0.0994119445 are found. Include the frequency (for the next fit).

Examine the plot. It looks very good.

8. **A Two-frequency fit.**

Click on the 'Fit' tab (top). Now select both F1 and F2. Probably you only need to click into the square to the left of F2 to see check marks next to both frequencies.

Click on 'Calculate'. The residuals decrease. Click on 'Improve all'. We obtain frequencies of 10 and 14.5, amplitudes of 0.2 and 0.1, respectively, and essentially zero residuals. That's it.

Do you want to see how the fit looks? Click on the 'Time string' tab and select 'Display Graph'. The program cannot show the fit for several nights. Therefore, select a single night (rectangle....). You now see the excellent fit.

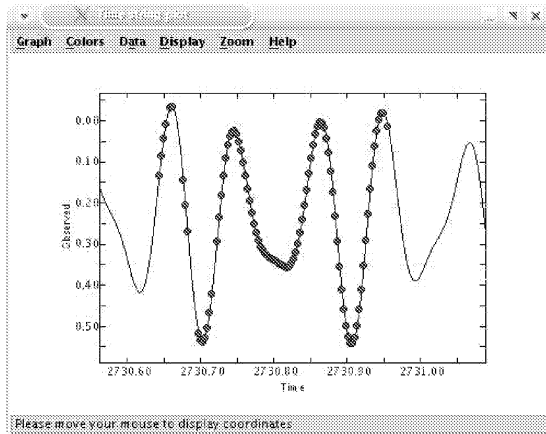


Figure 52: The final fit.

3.2 Tutorial 2: Least-squares fitting of data including a periodic time shift

This tutorial provides a basic introduction in how to find a multiple frequency solution to a data set, taking into account a periodic time shift. Such a periodic time shift could be the result of orbital light-time effects.

1. **Start Period04.**
2. **Import the data file.**

To read in the data set, press the button 'Import time string'. A file-selector dialog will be opened. Navigate to the directory that contains the tutorial time strings and select the file 'Tutorial2.dat'.

In the next dialog, we are going to specify the properties of the columns in the data file. The first column of our data file denotes time, whereas the second column contains the observed magnitudes. Period04 should already have assumed that, so just click on 'OK'.

Now press 'Display graph' and examine the time string. You will observe that a strong beating is present, which could be the result of two close frequencies.

3. **Extract the first frequency.**

Click on the 'Fourier' tab. In the 'Fourier Calculation Settings' panel, enter a title for the new Fourier spectrum. As you can see, the Nyquist frequency of this time string is 139.806 cycles/day. Extend the upper

limit of the frequency range to the lower integer part of this value (139). Before you start the calculation, make sure that the option 'Original data' is selected. Now press 'Calculate'.

A dialog will show up asking whether the zero point of magnitudes / intensities should be subtracted. Press 'Yes'. After the calculation has finished, the highest peak of the new spectrum is reported. Click on 'Yes' to copy the values of the frequency peak into the Fit Module.

In the 'Fourier' tab, press 'Display graph' to inspect the plot of the Fourier spectrum.

4. Calculate a first fit.

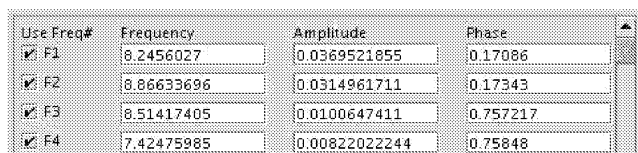
Switch to the 'Fit' tab. You will notice that the new found frequency has not yet been selected. Select frequency F1 and press 'Calculate' to improve amplitude and phase. Then, to improve all parameters press 'Improve all'.

To check how good this solution fits the data, move to the 'Time string' tab and press 'Display graph'. As you see, there is still some work to do.

5. Find and fit further frequencies.

Switch back to the 'Fourier' tab and calculate the next spectrum. From now on the Fourier calculations should be based on the 'Residuals at original', so make sure that this option is selected.

In the Fit Module, select the newly found frequency and press 'Calculate'. Then click on 'Improve all' to find the best least-squares solution.



Use Freq#	Frequency	Amplitude	Phase
<input checked="" type="checkbox"/> F1	8.2456027	0.0369521855	0.17086
<input checked="" type="checkbox"/> F2	8.86633696	0.0314961711	0.17343
<input checked="" type="checkbox"/> F3	8.51417405	0.0100647411	0.757217
<input checked="" type="checkbox"/> F4	7.42475985	0.0082202244	0.75848

Figure 53: The preliminary Four-frequency fit.

To detect further frequencies proceed as stated above. Extract two more frequencies. The residuals will continue to decrease. Fig 53 shows the frequency parameters you should obtain.

6. Examining the data

Finally, after extraction of four frequencies the least-squares solution fits quite well. Maximize the plot window and examine each night carefully. You will notice that during the first and the last nights of the time string the data points are shifted slightly to the right of the fit, whereas for the nights in the middle of the data set the points are situated slightly left of the fit. This may indicate that a periodic time shift is present with a period that is approximately equal to the total length of the data set in time, about 100 days. That corresponds to a frequency of 0.01 cycles/day.

Well, let us see if we can find any further frequencies. Switch to the Fourier Module and extract the next frequency:
 Frequency = 8.23515582 cycles/day and Amplitude = 0.00092585 magnitudes.

This is quite interesting, isn't it? This frequency is quite close to the first detected frequency (F1). The difference is only 0.010095 c/d which is roughly the value for the frequency of the periodic time shift estimated by visual inspection. It seems likely that the new frequency is an artefact caused by a periodic time shift.

Now let us check whether our suspicion, viz. the presence of a periodic time shift, can be confirmed. Leave the new frequency (F5) unselected and do not change your four-frequency solution.

7. Activate the periodic time shift (PTS) mode.

Parameters for the periodic time shift:

	Frequency	Amplitude	Phase
PTS	0	0	0
Search PTS start values		Improve PTS	
Use Freq#	Frequency	Amplitude	Phase
<input checked="" type="checkbox"/> F1	8.2456027	0.0369521855	0.17086
<input checked="" type="checkbox"/> F2	8.86633696	0.0314961711	0.17343
<input checked="" type="checkbox"/> F3	8.51417405	0.0100647411	0.757217
<input checked="" type="checkbox"/> F4	7.42475985	0.0082202244	0.75848
<input type="checkbox"/> F5	8.23515582	0.000925849158	0
<input type="checkbox"/> F6	0	0	0

Figure 54: The frequency panel in the periodic time shift mode.

Fitting a periodic time shift can only be done if Period04 runs in expert

mode. To activate the expert mode, set the option 'Expert mode' in the File menu selected. A new menu entry, Options, will appear on the menu bar. This menu contains the entry 'Set fitting function' which provides the alternative 'Standard formula with periodic time shift'. Select this option. Now the program is enabled for calculating least-squares fits including a periodic time shift. You will notice that the Fit Module has slightly changed.

8. Determining the periodic time shift parameters.

For non-linear fitting good starting values are essential. In general, initial values for the periodic time shift parameters can be estimated from visual inspection of the data, as we did before. Period04 also provides a tool to search for starting values within a user-defined range of frequencies and amplitudes by means of Monte Carlo shots. Press the button 'Search PTS start values' to use this option.

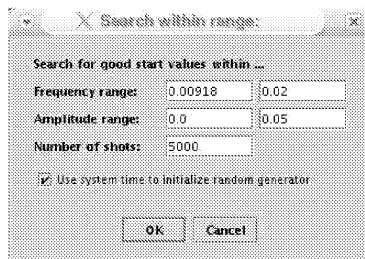


Figure 55: The 'Search PTS start values' dialog.

The lower frequency limit is calculated from the time base of the data set. You should not search for frequencies with lower values. The reason is that for such frequencies the time base of the data is too short to allow a reliable determination of the periodic time shift.

The number of shots refers to the number of initial parameter values that are being tested. We will keep the default values. However, we will deselect 'Use system time to initialize random generator' in order to allow the users to compare their results with the results given here. Press 'OK' to start the calculation.

After the calculation has finished, the best set of starting values for the periodic time shift parameters will be displayed (Frequency = 0.00975 cycles/day, Amplitude = 0.00104 days). Now let us improve these parameters by clicking on 'Improve PTS'.

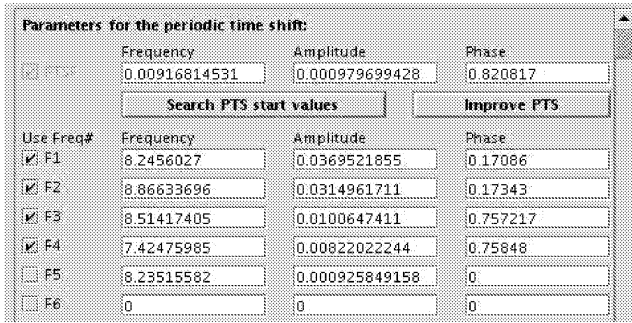


Figure 56: The fit after the determination of the periodic time shift parameters.

Finally, improve all frequencies together with the periodic time shift parameters by clicking on 'Improve all'. Do not use 'Calculate', as for a proper fit of a periodic time shift, the frequencies also have to be re-determined!

9. Extraction of further frequencies

Switch to the 'Fourier' tab and calculate a new Fourier spectrum. Press 'Display graph' and have a look at the plot. It is obvious that the detected frequency peak is not significant. Therefore, our analysis will stop at this point.

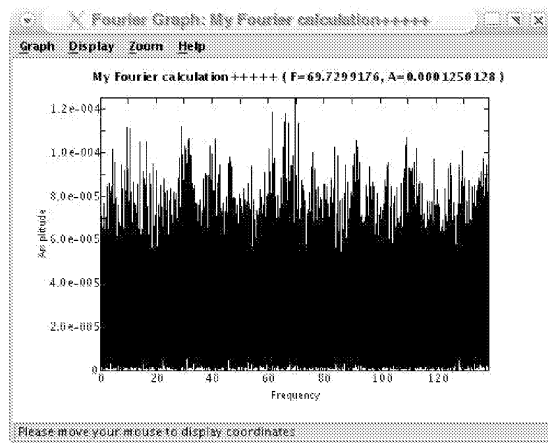


Figure 57: The Fourier spectrum shows no significant peak.

Please note:

Let us suppose that you have found a statistically significant frequency. In this case you should use 'Improve all' to obtain a new least-squares solution. Furthermore, you do not have to use the 'Search PTS start values' tool again, as you already have good starting values for the periodic time shift which can be improved.

10. The final solution

Your final fit using the four extracted frequencies and including a periodic time shift should be:

Parameters for the periodic time shift:			
	Frequency	Amplitude	Phase
<input checked="" type="checkbox"/>	0.0100072646	0.00101377098	0.492295
<input type="button" value="Search PTS start values"/>		<input type="button" value="Improve PTS"/>	
Use Freq#	Frequency	Amplitude	Phase
<input checked="" type="checkbox"/> F1	8.24559007	0.0368969737	0.191871
<input checked="" type="checkbox"/> F2	8.86632389	0.0315920335	0.195268
<input checked="" type="checkbox"/> F3	8.51414622	0.00995344792	0.802366
<input checked="" type="checkbox"/> F4	7.42475941	0.00818093604	0.761886

Figure 58: The final solution.

The residual noise is 0.000999 magnitudes.

Click on the 'Time string' tab and press the button 'Display graph'. You will notice that the solution fits the data very well. After having applied the periodic time shift, the data points are distributed uniformly on both sides of the fit.

Now let us compare the final parameters to the values that had been used to generate this time string:

#	Frequency	Amplitude	Phase
PTSF	0.01	0.001	0.5
F1	8.24559	0.036872	0.19192
F2	8.86632	0.031595	0.20128
F3	8.51414	0.009952	0.81182
F4	7.42476	0.008187	0.76091

Desired residual noise: 0.001

Note the good agreement. The deviation from the initial values is caused by noise.

4. Using Period04

Within this section some of the key features of Period04 are discussed. In many cases short step-by-step guides are given for easier comprehension.

4.1 Topics related to time string data

4.1.1 Importing time strings

1. Start the import

There are several different ways to start the import of a time string, e.g. you can use the 'Import' or 'Append' buttons in the 'Time string' folder. 'Import' erases old project data and then loads the new time string. 'Append' adds the time string to the current project without changing it otherwise.

In addition, there are two more general approaches:

- The 'Import → time string' command in the 'File' menu.
(Shortcut 'Ctrl+T')

This command checks whether the project already contains time string data. If no time points are found the file-selector dialog is shown, otherwise the program will display the dialog shown in Fig 59.



Figure 59: The selection dialog for time string imports.

'Append a new time string' simply adds a data set to your existing time string without any further changes in the project. If you select 'Replace the old time string' you have the possibility to instruct Period04 not to erase the frequency data and/or the log.

- Importing a time string through the Data Manager (section 2.13).

After having chosen one of the upper actions a file-selector is shown. By default all files with the extension 'dat' are shown. To display files with another extension, please select 'All files' in the file-selector dialog. Navigate to the appropriate directory and select the file containing time string data.

2. Set the file-format

The next step is to define the columns in your data file. For this purpose the file-format dialog is opened.

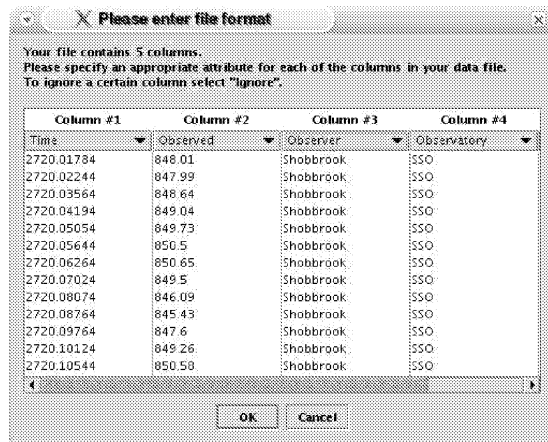


Figure 60: The file-format dialog.

The dialog displays the first few lines of the selected file and provides an initial guess for the column identification determined from the structure of the columns in the file. The dialog shows the first four columns of the file. In order to see the other columns, please use the scroll bar at the bottom of the text box.

The following data can be read in by the program:

- Time
- Observed
- Adjusted
- Residuals to Observed
- Residuals to Adjusted
- Calculated
- Point weight

- 4 attributes and 4 weights assigned to these attributes *)
- Ignore (column will not be read in)

*) The names of the attributes depend on the program settings and can be changed by clicking on the heading buttons in the Time String Module. The default names are 'Date', 'Observatory', 'Observer' and 'Other'. In order to change the default names, the Period04 preferences file has to be edited (see section 2.11).

3. Finally, press 'OK'

Please note:

Lines starting with '#', ';' or '%' will be treated as comment lines and are ignored.

Additional options:

It is also possible to select multiple files in the file-selector dialog. In this case, the program will ask the user for the file-format of the first data file. After the specification of the file-format, a dialog will show up that allows to select whether the program should apply the same file-format for all data files or to show the file-format dialog for every file.

If the columns of most of your data files have a very special format, you may find it useful to define a default file-format for reading in time strings. In this case the file-format dialog will always propose the given default file-format instead of trying to provide a guess about the file structure. This can be done by editing the Period04 preferences file (see section 2.11).

4.1.2 Exporting time string data

1. **Open the export dialog**

To start the export you can either press the button 'Export time string', use the shortcut 'Alt+E' or, if the program is running in expert mode, start the Data Manager and select the option 'Export time string data'. In any case the following dialog will show up:

2. **Set the output format**

The dialog contains two columns: the left text box lists all data columns that can be exported. To the right there is another box, which defines the structure of the columns in the resulting file. Now select the columns to be exported from the list of available columns. Click on the button

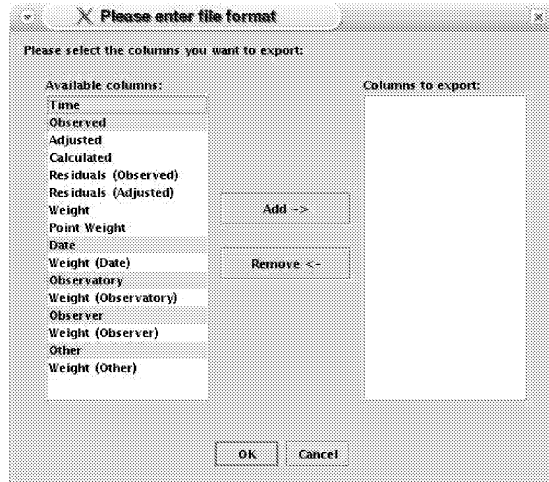


Figure 61: The time string export dialog.

'Add' to add these columns to the list on the right. If you want to remove a column that you have added before, simply select the column name in the 'Columns to export' list and press 'Remove'. Finally, when you have finished your selection, press 'OK'.

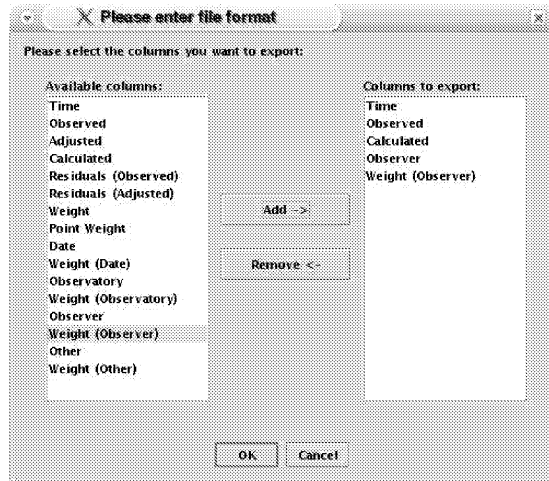


Figure 62: The time string export dialog with an example of a selection.

In the example shown in Fig. 62, we have chosen the columns 'Time', 'Observed', 'Calculated', 'Observer' and the weights assigned to the sub-strings of attribute 'Observer' for export.

3. Choose a file name

Now, a file chooser will ask you for a name for the file. Enter a file name and press 'Export' to start the export of the data.

4.1.3 Creating artificial data

It is easy to generate an equally-spaced artificial data set using Period04. First, make sure that there is a set of active frequencies – or at least one active frequency – in the frequency list of the Fit Module. The current fit will be used for the calculation of magnitude/intensity of the artificial data.

1. Select 'Create artificial data' in the Special menu

The 'Create artificial data' dialog will appear.

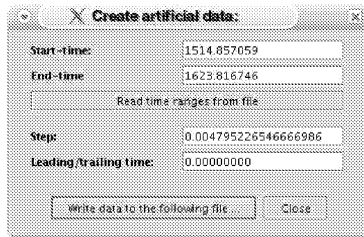


Figure 63: The 'Create artificial data' dialog.

2. Setting the time range(s)

There are two options to define the start and end times of the time series that will be generated:

- Definition of start and end time by the given input fields.
- Using the button 'Read time ranges from file' for reading the definitions of start and end times from a file.

The latter option has the advantage that artificial data for an arbitrary number of different start and end times can be created right away. Please make sure that the file obeys the following format conditions:

- first column: start time
- second column: end time

3. Calculation settings

Now you have to define the step size. By default a value of $1/(20 * F_{max})$ is given, which provides a good sampling even for the highest frequency.

The input field 'Leading/trailing time' gives you the possibility to extend the time ranges by a certain value.

4. **Start calculation and output of data**

Click on the button 'Write data to the following file ...' and choose a file in which the data should be written. If the file already exists, you will be prompted whether you want to append the data to the file, replace the file or to cancel the task.

4.2 Topics related to Fourier calculations

4.2.1 Calculation of Fourier spectra

Let us suppose that you have already read in a time string.

1. **Click on the 'Fourier' tab.**

As you can see, in the upper part of the window the settings for the Fourier calculation can be defined.

2. **Choose a title for the Fourier spectrum.**

3. **Define the frequency range for the spectrum.**

Make sure that the upper frequency bound does not exceed the Nyquist frequency.

4. **Choose a step rate.**

This value defines the step size in frequency. Usually the step rate quality 'High' provides a good sampling.

5. **If you want to use weighted data, set and activate the appropriate weights.**

See section 4.4.1 for more information on this topic.

6. **Choose the type of data you want to use.**

If this is the first frequency to be extracted from the data set, 'Original data' is the right choice. For subsequent frequencies you would select 'Residuals at original'. If you adjusted the zero-points of the time string select 'Adjusted' instead of 'Original'.

7. **Select the compact mode.**

If you want to reduce the output (the number of data points) of the Fourier calculation, select 'Peaks only'. If this option is selected only the local extrema of the spectrum will be saved.

8. **Press 'Calculate' to start the calculation.**

A dialog will be opened and you will be asked whether you want to

subtract the zero point of the magnitudes/intensities. Press 'Yes'. While the program is calculating the 'Calculating' tab is being shown. It reports the progress of the calculation and shows the chosen settings. By clicking on the button 'Cancel Calculation' the calculation can be stopped.

9. After the calculation has been finished, a dialog is opened that informs you about the value of the highest peak and asks you if you want to include this frequency. Press 'Yes' to add the frequency to the frequency list in the 'Fit' tab.
10. Inspect the Fourier spectrum visually by clicking on 'Display Graph'. The next step is to make a least-squares fit. See 'Calculation of least-squares fits' for further details.
11. For extracting further frequencies proceed as stated above except that you choose 'Residuals at original' instead of 'Original data'.

4.2.2 Significance of frequencies

Every measurement is affected by noise that may be generated by many sources (e.g., observations, instrumentation, undetected frequencies). For Fourier spectra, noise has the annoying effect that a peak that has been found may not be real.

The signal to noise ratio

Therefore, a criterion is needed to ensure that the signal is a real feature. Empirical results from observational analyses by Breger et al. (1993) and numerical simulations from Kuschnig et al. (1997) have shown that the ratio between signal and noise in amplitude should not be lower than 4.0 for high significance.

What is the signal?

As signal we define either the amplitude of the respective peak in the Fourier spectrum or the amplitude of the least-squares solution for the peak.

What is the noise?

The noise is defined as the average amplitude in a frequency range that encloses the detected peak. The noise may be calculated before or after prewhitening the peak. The choice is beyond the scope of this manual.

Checking the significance of a frequency

Let us assume that you have calculated a Fourier spectrum and detected a new peak.

1. **Select 'Calculate noise at frequency' in the 'Special' menu.**

By default the program loads the last frequency value from the frequency list in the Fit Module into the frequency field of the dialog. If you want to calculate the noise for an other frequency, type the new frequency value into the frequency field.

2. **Define the box size for the noise calculation.**

This value specifies the frequency range $[frequency - \frac{boxsize}{2}, frequency + \frac{boxsize}{2}]$ which is being used for the calculation of the noise.

3. **Choose a step rate.**

Usually the step rate quality 'High' provides a very good sampling.

4. **Select the type of data to use for the noise calculation.**

In most cases 'Residuals at original' is what you need, unless you work with adjusted data.

5. **Press 'Calculate' to start the calculation.**

After the calculation has been finished, the noise result will be displayed in the text area in the lower part of the window. If the frequency has been selected from the combo-box then even the signal to noise ratio will be shown.

Period04 also contains the possibility to calculate a noise spectrum. See section 2.8.20 for more details.

4.3 Topics related to least-squares calculations

4.3.1 Calculation of least-squares fits

This is a step-by-step guide for calculating least-squares fits using the standard fitting formula:

$$f(t) = Z + \sum_i A_i \sin(2\pi(\Omega_i t + \Phi_i))$$

1. Click on the 'Fit' tab.
2. After you have extracted a frequency by means of a Fourier calculation, the frequency and amplitude are added to the frequency list. You may also enter own frequency values.
3. Activate the new frequency by selecting the check box at the beginning of the frequency line.
4. Select the type of data you want to use. By default 'Original data' is selected.
5. If you want to use weighted data, set the appropriate weights. See section 4.4.1 for more information on this topic.
6. Press 'Calculate' to improve amplitude and phase.
7. Press 'Improve all' to improve all parameters, including the value of the frequency.

Period04 does also allow for more sophisticated least-squares fits:

- **Improve special:**

If you want to define a specific selection of parameters that should be improved, then choose this option.

- **Calculate amplitude/phase variations:**

Use this if you suspect that the amplitude and/or phase of a parameter is variable in different substrings.

- When the expert mode is active it is possible to calculate least-squares fits that include a periodic time shift. See section 4.3.3 for more information on this topic.

4.3.2 Calculation of amplitude/phase variations

If you suspect that the amplitude and/or phase of a parameter is variable within different substrings (e.g., representing different years), you might consider to use this tool.

1. Prerequisites:

Let us assume that you have a set of frequencies and a certain subdivision of your time string in the attribute 'Date'. By calculating a least-squares fit for each substring separately you realized that the amplitude of a frequency might be variable.

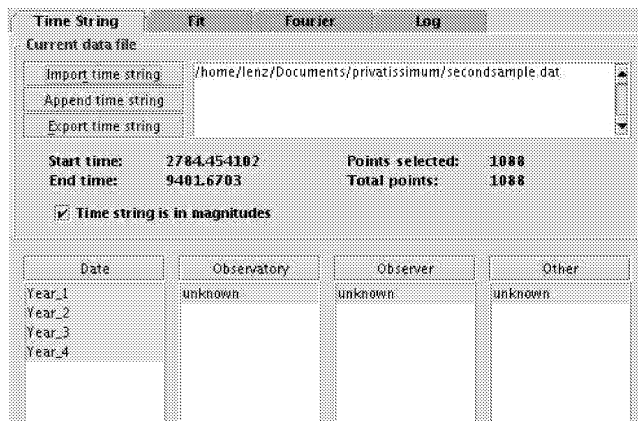


Figure 64: In this example a time string has been subdivided in attribute 'Date'.

2. Press the button 'Calculate amplitude/phase variations' in the Fit Module.
3. In the dialog, select the attribute in which the subdivision of the time string is located.
4. Choose the type of variation: 'amplitude variation', 'phase variation' or 'amplitude and phase variations'.
5. Select the frequency that shows the amplitude variation.
6. Decide whether you want to improve 'all amplitudes and phases' while keeping the frequencies fixed, or to define a special selection of variable parameters. If you prefer the latter, then click on 'special' to open a dialog for the definition of the selection.
7. Press 'Calculate' to start the calculation.

8. After the calculation has finished the results are displayed in the text box below.

4.3.3 Using the periodic time shift mode

In order to account for light time effects, Period04 does also allow to include a periodic time shift in your least-squares calculations. In this case the fitting formula is extended in the following way:

$$f(t) = Z + \sum_i A_i \sin(2\pi (\Omega_i [t + \alpha_{pts} \sin(2\pi (\omega_{pts} t + \phi_{pts}))] + \Phi_i))$$

The periodic time shift parameters are labeled with the subscript 'pts'. Z denotes the zero point of $f(t)$ and A_i , Ω_i and Φ_i the parameters of frequency i .

Please note:

This calculation mode can only be selected when the expert mode is activated.

Let us assume that you already read in a data set and extracted some frequencies. The visual inspection seems to indicate that the times are shifted with a certain period.

1. Select the periodic time shift mode

First, activate the expert mode by selecting 'Expert mode' in the 'File' menu. You will notice that a new menu, 'Options', has appeared. This menu contains the entry 'Set fitting function' which provides two choices: Standard formula and Standard formula with periodic time shift. Click on the latter.

2. Set parameters for the periodic time shift

By inspection of your data you might already have a rough estimate of frequency and amplitude for the periodic time shift. You can either enter these values into the respective field directly, or use the 'Search PTS start values' button to search for a good start value for the periodic time shift parameters within a user-defined range of frequencies and amplitudes.

The lower frequency limit is calculated from the time base of the data set. You should not search for frequencies with lower values since for these frequencies the time base of the data is too short to allow a reliable determination of the periodic time shift.

The number of shots refers to the number of initial parameter values that are being tested.

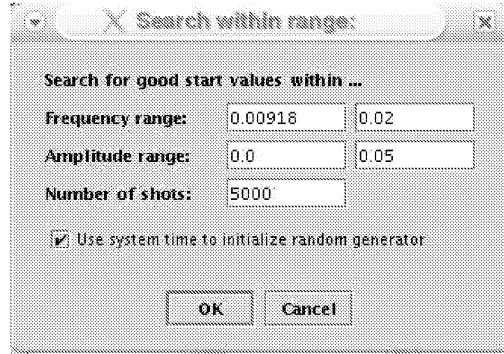


Figure 65: The 'Search PTS start values' dialog.

3. Improving the parameters and the fit

The next step is to improve the periodic time shift parameters by means of a least-squares fit. In order to start this calculation, press 'Improve PTS'. Please note that the common frequency parameters will be kept fixed during this calculation.

Now it is time to make a least-squares fit that considers all parameters as variable. For this purpose press 'Improve all'. Do not use 'Calculate', as for a proper fit of a periodic time shift, the frequencies also have to be redetermined!

Please note:

If the start values are not good enough it might occur that the least-squares algorithm gets trapped in a false local minimum. Generally, nonlinear fitting requires some judgment from the user!

Please see section 3.2 for a tutorial that explains the same matter using an example time string.

4.3.4 Estimation of uncertainties

Period04 provides several tools to calculate the uncertainties of the parameters of a fit:

- Calculation of uncertainties from the error matrix of a least-squares calculation
- Monte Carlo Simulation

- Uncertainties calculated from analytically derived formulae assuming an ideal case.

Please note:

The errors of frequency and phase are correlated. However, by an appropriate choice of a zero point in time the uncertainties for frequency and phase can be decoupled. This is the case when

$$\sum_{i=1}^N t_i = 0$$

(Breger et al., 1999). It is very likely that your data set does not fulfill this condition. Therefore, Period04 provides the possibility to shift the data set by the required value in time, for the purpose of determining the uncorrelated parameter uncertainties when the standard fitting formula is being used.

1. Calculation of uncertainties from the error matrix of a least-squares calculation

Period04 applies the curfit routine from Bevington (1969), which is a Levenberg-Marquardt non-linear least-squares fitting procedure. As a by-product of least-squares fits an error matrix is available from which parameter uncertainties can be calculated. In some cases though (i.e., when the error matrix is ill-conditioned) this method does not provide a good estimate of the uncertainties. In order to ensure that the calculated uncertainties are reliable, Period04 performs checks for these cases.

The output of common least-squares fits are correlated uncertainties. When the standard fitting formula is being used, Period04 additionally offers the possibility to calculate uncorrelated uncertainties.

To calculate the uncertainties of the fit parameters, press 'Calculate LS uncertainties' in the 'Goodness of Fit' tab. If you improved frequencies and phases simultaneously, a dialog will ask you whether you want to uncouple the uncertainties of frequency and phase (in other words: whether you want to calculate correlated or uncorrelated uncertainties). After you made your choice, the uncertainties will be displayed in the text box.

2. Monte Carlo Simulation

Monte Carlo simulations are a very reliable way to determine parameter uncertainties. The principle idea is to repeat an experiment (in our case the optimization routine) on a generated set of samples.

For the Monte Carlo simulation Period04 generates a set of time strings. Each data set is created as follows:

- The times of the data points are the same as for the original time string.
- The magnitudes of the data points are the magnitudes predicted by the last fit plus Gaussian noise.

For every data set a least-squares calculation will be done. Based on the distribution of fit parameters the program calculates the uncertainties of the parameters.

A short step-by-step guide for making Monte Carlo simulations:

- The Monte Carlo simulation will use the same settings that have been used for the last fit. So if you want to determine the uncertainties for all parameters, you will have to make a least-squares calculation with all parameters variable first.
- Now click on 'Monte Carlo Simulation' in the 'Goodness of Fit' tab. In the dialog you have to define some settings for the simulation:

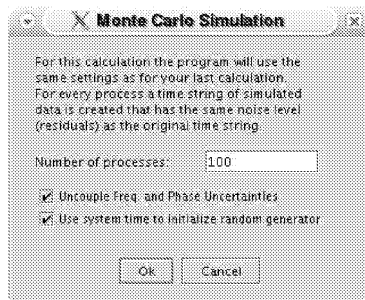


Figure 66: The 'Monte Carlo Simulation' dialog.

Number of processes

A 'process' consists of the creation of time string data and a least-squares calculation to determine the fit parameters. A low number of processes results in a bad estimation of the uncertainties. Therefore, to obtain reliable results, a high number of processes is necessary.

Uncouple Frequency and Phase Uncertainties

If this option is selected, the time string will be shifted in time so that the 'average time' is zero. In this case the frequency and phase uncertainties are no longer correlated. This check box will only be visible if this option might be useful, i.e., when

both frequency and phase parameters are fitted using the standard fitting formula.

Use system time to initialize random generator

If this option is selected the random number generator that is used to create the time string data sets will be initialized with the current system time.

- Press 'OK' to start the calculations. Depending on the number of time points and the number of processes this might be a quite time consuming task.

3. Uncertainties calculated from analytically derived formulae assuming an ideal case

Based on some assumptions one can derive a formula for the uncertainties in frequency, amplitude and phase. See Breger et al. (1999) for the derivation based on a mono periodic fit. If cross terms can be neglected then the following equations can also be applied for each pulsation frequency separately:

$$\begin{aligned}\sigma(f) &= \sqrt{\frac{6}{N}} \frac{1}{\pi T} \frac{\sigma(m)}{a} \\ \sigma(a) &= \sqrt{\frac{2}{N}} \sigma(m) \\ \sigma(\phi) &= \frac{1}{2\pi} \sqrt{\frac{2}{N}} \frac{\sigma(m)}{a}.\end{aligned}$$

N is the number of time points, T is the time length of the data set, $\sigma(m)$ denotes the residuals from the fit and a refers to the amplitude of the frequency.

To show these parameter uncertainties, select 'Show analytical uncertainties' in the 'Special' menu.

Please note:

This option is only available when using the standard fitting formula.

4.4 General topics

4.4.1 Using weights

Period04 does also handle weighted data. It recognizes three different types of weights:

- **Point weight**

Each measurement has its own weight.

- **Deviation weight**

Filtering of poor data points.

- **Attribute weights**

Weights assigned to substrings of each of the four attributes (Date, Observer,...)

In order to use weights the user has to set or read in weights AND to activate them for calculations. This can be done in the 'Weight selection dialog' which can be accessed by the 'Special' menu or via the shortcut 'Ctrl+W'.

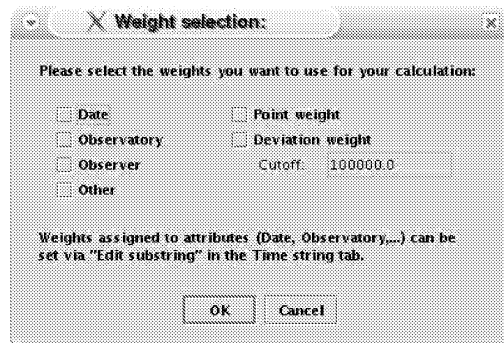


Figure 67: The 'Weight selection' dialog

Using point weights:

As 'point weight' we denote weights that are assigned to each of your data points. Point weights can only be read in along with time string data. To include these data proceed as described here:

1. Click on the button 'Import time string' and select the file that contains your data set in the file-selector dialog.
2. Now another dialog appears. It will show the columns in your data file and asks you to label these columns correctly. Specify the column that contains the point weight data as 'Pnt.weight' and select appropriate labels for the other columns too – at least 'Time' and 'Observed' are required. Press 'OK'.

3. Although your data set has been read in, the program does not yet include the point weights in calculations. They have to be activated in the 'Weight selection dialog' first. So open the dialog, select 'Point weight' and press 'OK'.

From this point the program will use the weighted data until you deselect this option.

Using deviation weights:

The deviation weights are calculated from the residuals of data points:

$$\text{residual} = |\text{observed} - \text{calculated}|$$

$$\text{deviation weight} = \begin{cases} 1.0 & \text{if residual} < \text{cutoff} \\ \left(\frac{\text{cutoff}}{\text{residual}}\right)^2 & \text{if residual} \geq \text{cutoff} \end{cases}$$

In order to use deviation weights open the 'Weight selection dialog', select 'Deviation weight' and set an appropriate cutoff value.

Using attribute weights:

Each of the four list boxes in the 'Time string' tab represents an attribute. The default names of these attributes are 'Date', 'Observatory', 'Observer' and 'Other'. If the time string has been subdivided in at least one attribute it is possible to give each substring a certain weight.

1. If you have not done so already, read in a time string.
2. Subdivide the time string. Let us assume that you divided the time string into several substrings in the attribute 'Date'.
3. Select a substring for which you want to change the weight. Open the 'Edit substring properties' menu by pressing the 'Edit substring' button at the bottom of the 'Date' list box. You can also access this dialog directly via the pop-up menu.
4. Type the new weight value into the respective field and press 'OK'.
5. To enable the weights assigned to substrings of attribute 'Date', open the 'Weight selection dialog', select 'Date' and press 'OK'. Now these weights will be included in all calculations.

5. Copyright notice

Copyright ©2004-2005 Patrick Lenz, Institute of Astronomy, University of Vienna

Permission to use, copy, modify, and distribute this software and its documentation for any purpose is hereby granted without fee, provided that the above copyright notice, author statement and this permission notice appear in all copies of this software and related documentation.

THE SOFTWARE IS PROVIDED 'AS-IS' AND WITHOUT WARRANTY OF ANY KIND, EXPRESS, IMPLIED OR OTHERWISE, INCLUDING WITHOUT LIMITATION, ANY WARRANTY OF MERCHANTABILITY OR FITNESS FOR A PARTICULAR PURPOSE. IN NO EVENT SHALL THE INSTITUTE OF ASTRONOMY OR THE UNIVERSITY OF VIENNA OR PATRICK LENZ BE LIABLE FOR ANY SPECIAL, INCIDENTAL, INDIRECT OR CONSEQUENTIAL DAMAGES OF ANY KIND, OR ANY DAMAGES WHATSOEVER RESULTING FROM LOSS OF USE, DATA OR PROFITS, WHETHER OR NOT ADVISED OF THE POSSIBILITY OF DAMAGE, AND ON ANY THEORY OF LIABILITY, ARISING OUT OF OR IN CONNECTION WITH THE USE OR PERFORMANCE OF THIS SOFTWARE.

Period04 is based on Period98 (Copyright ©1996-1998 by Martin Sperl).

5.1 Third party software

Period04 makes use of the following third party software:

- Scientific Graphics Toolkit (SGT) - an open source library of Java graphics classes.
The SGT is provided by NOAA (National Oceanic and Atmospheric Administration) for full, free and open release and is available at <http://www.epic.noaa.gov/java/sgt/sgt.download.shtml>.
- EpsGraphics2D - an open source package for creating high quality EPS graphics
Copyright ©2001-2004 by Paul James Mutton
<http://www.jibble.org/epsgraphics/>
- JavaHelp™2.0_01
Copyright 2003 Sun Microsystems, Inc.
<http://java.sun.com/products/javahelp>

Acknowledgments. We are grateful to M. Sperl for valuable comments. This work was supported by the Austrian Fonds zur Förderung der wissenschaftlichen Forschung (Project P17441-N02).

References

- Bevington, P. R., 1969, Data reduction and error analysis for the physical sciences, McGraw-Hill (New York)
- Breger M., Handler G., Garrido R., et al., 1999, A&A, 349, 225
- Breger et al., 1993, A&A 271,482
- Kuschnig et al., 1997, A&A 328, 544
- Sperl, M. 1998, CoAst 111,1